

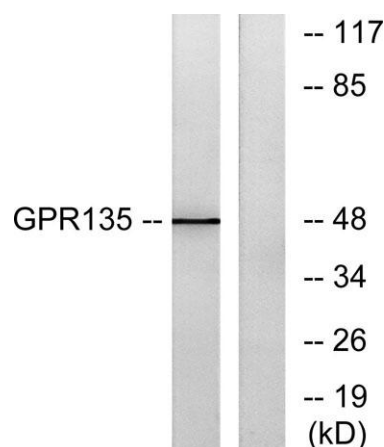
**GPR135 rabbit pAb****Cat#: orb770060 (Manual)**

For research use only. Not intended for diagnostic use.

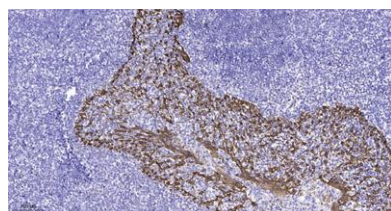
<b>Product Name</b>	GPR135 rabbit pAb
<b>Host species</b>	Rabbit
<b>Applications</b>	WB;IHC;IF;ELISA
<b>Species Cross-Reactivity</b>	Human;Mouse;Rat
<b>Recommended dilutions</b>	Western Blot: 1/500 - 1/2000. Immunohistochemistry: 1/100 - 1/300. Immunofluorescence: 1/200 - 1/1000. ELISA: 1/5000. Not yet tested in other applications.
<b>Immunogen</b>	The antiserum was produced against synthesized peptide derived from human GPR135. AA range:371-420
<b>Specificity</b>	GPR135 Polyclonal Antibody detects endogenous levels of GPR135 protein.
<b>Formulation</b>	Liquid in PBS containing 50% glycerol, 0.5% BSA and 0.02% sodium azide..
<b>Storage</b>	Store at -20°C. Avoid repeated freeze-thaw cycles.
<b>Protein Name</b>	Probable G-protein coupled receptor 135
<b>Gene Name</b>	GPR135
<b>Cellular localization</b>	Cell membrane ; Multi-pass membrane protein . Endosome membrane ; Multi-pass membrane protein . Colocalizes with ARRB2/beta-arrestin-2 in the endosome. .
<b>Purification</b>	The antibody was affinity-purified from rabbit antiserum by affinity-chromatography using epitope-specific immunogen.

<b>Clonality</b>	Polyclonal
<b>Concentration</b>	1 mg/ml
<b>Observed band</b>	48kD
<b>Human Gene ID</b>	64582
<b>Human Swiss-Prot Number</b>	Q8IZ08
<b>Alternative Names</b>	GPR135; Probable G-protein coupled receptor 135

**Background** function:Orphan receptor.,similarity:Belongs to the G-protein coupled receptor 1 family.,



Western blot analysis of lysates from NIH/3T3 cells, using GPR135 Antibody. The lane on the right is blocked with the synthesized peptide.



Immunohistochemical analysis of paraffin-embedded human tonsil. 1, Antibody was diluted at 1:200(4° overnight). 2, Tris-EDTA,pH9.0 was used for antigen retrieval. 3,Secondary antibody was diluted at 1:200(room temperature, 45min).