

Cadherin-24 rabbit pAb

Cat#: orb770044 (Manual)

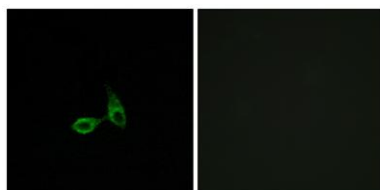
For research use only. Not intended for diagnostic use.

Product Name	Cadherin-24 rabbit pAb
Host species	Rabbit
Applications	IF;WB;ELISA
Species Cross-Reactivity	Human;Mouse
Recommended dilutions	WB 1:500-2000 Immunofluorescence: 1/200 - 1/1000. ELISA: 1/10000. Not yet tested in other applications.
Immunogen	The antiserum was produced against synthesized peptide derived from human CDH24. AA range:81-130
Specificity	Cadherin-24 Polyclonal Antibody detects endogenous levels of Cadherin-24 protein.
Formulation	Liquid in PBS containing 50% glycerol, 0.5% BSA and 0.02% sodium azide..
Storage	Store at -20°C. Avoid repeated freeze-thaw cycles.
Protein Name	Cadherin-24
Gene Name	CDH24
Cellular localization	Cell membrane ; Single-pass type I membrane protein .
Purification	The antibody was affinity-purified from rabbit antiserum by affinity-chromatography using epitope-specific immunogen.
Clonality	Polyclonal

Concentration	1 mg/ml
Observed band	
Human Gene ID	64403
Human Swiss-Prot Number	Q86UP0
Alternative Names	CDH24; CDH11L; Cadherin-24

Background

function: Cadherins are calcium dependent cell adhesion proteins.,function: Cadherins are calcium dependent cell adhesion proteins. They preferentially interact with themselves in a homophilic manner in connecting cells; cadherins may thus contribute to the sorting of heterogeneous cell types. Cadherin-24 mediate strong cell-cell adhesion.,similarity: Contains 5 cadherin domains.,subunit: Associates with alpha-, beta- and delta-catenins.,



Immunofluorescence analysis of HepG2 cells, using CDH24 Antibody. The picture on the right is blocked with the synthesized peptide.