

GalNAc4ST-1 rabbit pAb**Cat#: orb770042 (Manual)**

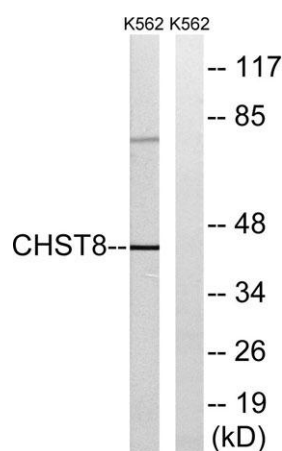
For research use only. Not intended for diagnostic use.

Product Name	GalNAc4ST-1 rabbit pAb
Host species	Rabbit
Applications	WB;ELISA
Species Cross-Reactivity	Human;Mouse;Rat
Recommended dilutions	Western Blot: 1/500 - 1/2000. ELISA: 1/40000. Not yet tested in other applications.
Immunogen	The antiserum was produced against synthesized peptide derived from human CHST8. AA range:341-390
Specificity	GalNAc4ST-1 Polyclonal Antibody detects endogenous levels of GalNAc4ST-1 protein.
Formulation	Liquid in PBS containing 50% glycerol, 0.5% BSA and 0.02% sodium azide..
Storage	Store at -20°C. Avoid repeated freeze-thaw cycles.
Protein Name	Carbohydrate sulfotransferase 8
Gene Name	CHST8
Cellular localization	Golgi apparatus membrane ; Single-pass type II membrane protein .
Purification	The antibody was affinity-purified from rabbit antiserum by affinity-chromatography using epitope-specific immunogen.
Clonality	Polyclonal

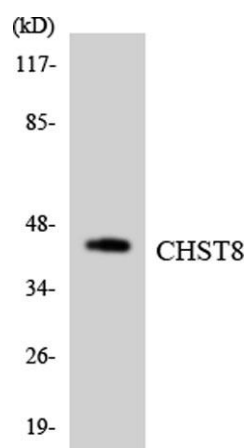
Concentration	1 mg/ml
Observed band	40kD
Human Gene ID	64377
Human Swiss-Prot Number	Q9H2A9
Alternative Names	CHST8; Carbohydrate sulfotransferase 8; GalNAc-4-O-sulfotransferase 1; GalNAc-4-ST1; GalNAc4ST-1; N-acetylgalactosamine-4-O-sulfotransferase 1

Background

The protein encoded by this gene belongs to the sulfotransferase 2 family. It is predominantly expressed in the pituitary gland, and is localized to the golgi membrane. This protein catalyzes the transfer of sulfate to position 4 of non-reducing N-acetylgalactosamine (GalNAc) residues in both N-glycans and O-glycans. It is responsible for sulfation of GalNAc on luteinizing hormone (LH), which is required for production of the sex hormones. Mice lacking this enzyme, exhibit increased levels of circulating LH, and precocious sexual maturation of both male and female mice. Alternatively spliced transcript variants have been found for this gene. [provided by RefSeq, Aug 2011],



Western blot analysis of lysates from K562 cells, using CHST8 Antibody. The lane on the right is blocked with the synthesized peptide.



Western blot analysis of the lysates from HT-29 cells using CHST8 antibody.