

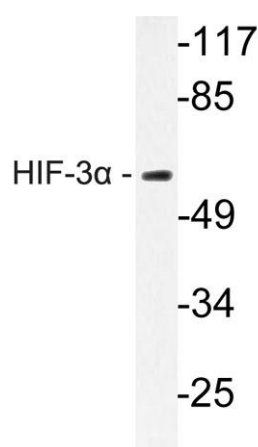
HIF-3 α rabbit pAb**Cat#: orb770040 (Manual)**

For research use only. Not intended for diagnostic use.

Product Name	HIF-3 α rabbit pAb
Host species	Rabbit
Applications	WB;ELISA
Species Cross-Reactivity	Human;Mouse;Rat
Recommended dilutions	Western Blot: 1/500 - 1/2000. ELISA: 1/20000. Not yet tested in other applications.
Immunogen	The antiserum was produced against synthesized peptide derived from human HIF-3 α . AA range:305-354
Specificity	HIF-3 α Polyclonal Antibody detects endogenous levels of HIF-3 α protein.
Formulation	Liquid in PBS containing 50% glycerol, 0.5% BSA and 0.02% sodium azide..
Storage	Store at -20°C. Avoid repeated freeze-thaw cycles.
Protein Name	Hypoxia-inducible factor 3- α
Gene Name	HIF3A
Cellular localization	nucleus,nucleoplasm,mitochondrion,cytosol,nuclear speck,
Purification	The antibody was affinity-purified from rabbit antiserum by affinity-chromatography using epitope-specific immunogen.
Clonality	Polyclonal

Concentration	1 mg/ml
Observed band	72kD
Human Gene ID	64344
Human Swiss-Prot Number	Q66K72
Alternative Names	Hypoxia-inducible factor 3-alpha; HIF-3-alpha; HIF3-alpha; Basic-helix-loop-helix-PAS protein MOP7; Class E basic helix-loop-helix protein 17; bHLHe17; HIF3-alpha-1; Inhibitory PAS domain protein; IPAS; Member of PAS protein 7; PAS domain-c

Background hypoxia inducible factor 3 alpha subunit(HIF3A) Homo sapiens The protein encoded by this gene is the alpha-3 subunit of one of several alpha/beta-subunit heterodimeric transcription factors that regulate many adaptive responses to low oxygen tension (hypoxia). The alpha-3 subunit lacks the transactivation domain found in factors containing either the alpha-1 or alpha-2 subunits. It is thought that factors containing the alpha-3 subunit are negative regulators of hypoxia-inducible gene expression. Multiple alternatively spliced transcript variants have been found for this gene. [provided by RefSeq, Mar 2011],



Western blot analysis of lysate from rat brain cells, using **HIF-3α** antibody.