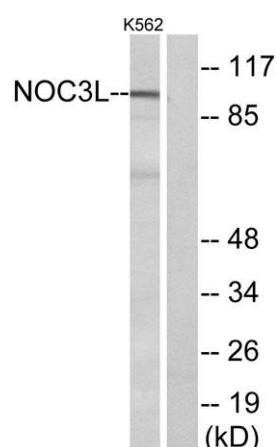


NOC3L rabbit pAb**Cat#: orb770035 (Manual)**

For research use only. Not intended for diagnostic use.

Product Name	NOC3L rabbit pAb
Host species	Rabbit
Applications	WB;ELISA
Species Cross-Reactivity	Human;Mouse
Recommended dilutions	Western Blot: 1/500 - 1/2000. ELISA: 1/40000. Not yet tested in other applications.
Immunogen	The antiserum was produced against synthesized peptide derived from human NOC3L. AA range:415-464
Specificity	NOC3L Polyclonal Antibody detects endogenous levels of NOC3L protein.
Formulation	Liquid in PBS containing 50% glycerol, 0.5% BSA and 0.02% sodium azide..
Storage	Store at -20°C. Avoid repeated freeze-thaw cycles.
Protein Name	Nucleolar complex protein 3 homolog
Gene Name	NOC3L
Cellular localization	Nucleus, nucleolus. Nucleus speckle.
Purification	The antibody was affinity-purified from rabbit antiserum by affinity-chromatography using epitope-specific immunogen.
Clonality	Polyclonal

Concentration	1 mg/ml
Observed band	93kD
Human Gene ID	64318
Human Swiss-Prot Number	Q8WTT2
Alternative Names	NOC3L; AD24; C10orf117; FAD24; Nucleolar complex protein 3 homolog; NOC3 protein homolog; Factor for adipocyte differentiation 24; NOC3-like protein; Nucleolar complex-associated protein 3-like protein
Background	function:May be required for adipogenesis.,similarity:Belongs to the CBF/MAK21 family.,tissue specificity:Expressed in colon, heart, kidney, liver, lung, placenta, skeletal muscle, small intestine, spleen and thymus.,



Western blot analysis of lysates from K562 cells, using NOC3L Antibody. The lane on the right is blocked with the synthesized peptide.