

SH2D4A rabbit pAb**Cat#: orb770015 (Manual)**

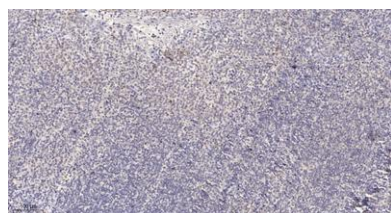
For research use only. Not intended for diagnostic use.

Product Name	SH2D4A rabbit pAb
Host species	Rabbit
Applications	IHC;IF;ELISA
Species Cross-Reactivity	Human;Rat;Mouse;
Recommended dilutions	Immunohistochemistry: 1/100 - 1/300. ELISA: 1/20000. Not yet tested in other applications.
Immunogen	The antiserum was produced against synthesized peptide derived from human SH2D4A. AA range:180-220
Specificity	SH2D4A Polyclonal Antibody detects endogenous levels of SH2D4A protein.
Formulation	Liquid in PBS containing 50% glycerol, 0.5% BSA and 0.02% sodium azide..
Storage	Store at -20°C. Avoid repeated freeze-thaw cycles.
Protein Name	SH2 domain-containing protein 4A
Gene Name	SH2D4A
Cellular localization	Cytoplasm . Located at podocyte foot processes. .
Purification	The antibody was affinity-purified from rabbit antiserum by affinity-chromatography using epitope-specific immunogen.
Clonality	Polyclonal

Concentration	1 mg/ml
Observed band	
Human Gene ID	63898
Human Swiss-Prot Number	Q9H788
Alternative Names	SH2D4A; SH2A; SH2 domain-containing protein 4A; Protein SH(2)A

Background

sequence caution:Translated as stop.,sequence caution:Translation N-terminally extended.,similarity:Contains 1 SH2 domain.,tissue specificity:Ubiquitously expressed. Aberrantly expressed in some cancers.,



Immunohistochemical analysis of paraffin-embedded human tonsil. 1, Antibody was diluted at 1:200(4° overnight). 2, Tris-EDTA,pH9.0 was used for antigen retrieval. 3,Secondary antibody was diluted at 1:200(room temperature, 30min).