

ABHD4 rabbit pAb**Cat#: orb770013 (Manual)**

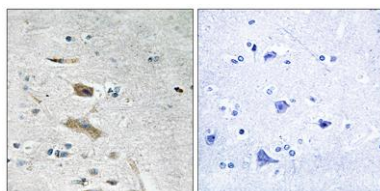
For research use only. Not intended for diagnostic use.

Product Name	ABHD4 rabbit pAb
Host species	Rabbit
Applications	IHC;IF;ELISA
Species Cross-Reactivity	Human;Mouse
Recommended dilutions	Immunohistochemistry: 1/100 - 1/300. ELISA: 1/20000. Not yet tested in other applications.
Immunogen	The antiserum was produced against synthesized peptide derived from human ABHD4. AA range:251-300
Specificity	ABHD4 Polyclonal Antibody detects endogenous levels of ABHD4 protein.
Formulation	Liquid in PBS containing 50% glycerol, 0.5% BSA and 0.02% sodium azide..
Storage	Store at -20°C. Avoid repeated freeze-thaw cycles.
Protein Name	Abhydrolase domain-containing protein 4
Gene Name	ABHD4
Cellular localization	endoplasmic reticulum membrane,lipid particle,
Purification	The antibody was affinity-purified from rabbit antiserum by affinity-chromatography using epitope-specific immunogen.
Clonality	Polyclonal

Concentration	1 mg/ml
Observed band	
Human Gene ID	63874
Human Swiss-Prot Number	Q8TB40
Alternative Names	ABHD4; Abhydrolase domain-containing protein 4; Alpha/beta-hydrolase 4; Lyso-N-acylphosphatidylethanolamine lipase

Background

caution:Thr-291 is present instead of the conserved His which is expected to be an active site residue.,function:Lysophospholipase selective for N-acyl phosphatidylethanolamine (NAPE). Contributes to the biosynthesis of N-acyl ethanolamines, including the endocannabinoid anandamide by hydrolyzing the sn-1 and sn-2 acyl chains from N-acyl phosphatidylethanolamine (NAPE) generating glycerophospho-N-acyl ethanolamine (GP-NAE), an intermediate for N-acyl ethanolamine biosynthesis. Hydrolyzes substrates bearing saturated, monounsaturated, polyunsaturated N-acyl chains. Shows no significant activity towards other lysophospholipids, including lysophosphatidylcholine, lysophosphatidylethanolamine and lysophosphatidylserine.,similarity:Belongs to the peptidase S33 family. ABHD4/ABHD5 subfamily.,



Immunohistochemistry analysis of paraffin-embedded human brain tissue, using ABHD4 Antibody. The picture on the right is blocked with the synthesized peptide.