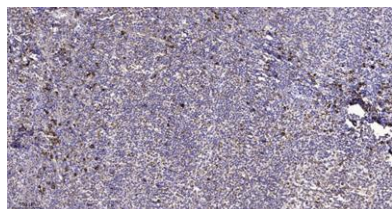


Na⁺ CP type II α rabbit pAb**Cat#: orb769996 (Manual)**

For research use only. Not intended for diagnostic use.

Product Name	Na ⁺ CP type II α rabbit pAb
Host species	Rabbit
Applications	WB;IHC;IF;ELISA
Species Cross-Reactivity	Human;Mouse;Rat
Recommended dilutions	Immunohistochemistry: 1/100 - 1/300. ELISA: 1/40000. Not yet tested in other applications.
Immunogen	Synthesized peptide derived from the Internal region of human Na ⁺ CP type II α .
Specificity	Na ⁺ CP type II α Polyclonal Antibody detects endogenous levels of Na ⁺ CP type II α protein.
Formulation	Liquid in PBS containing 50% glycerol, 0.5% BSA and 0.02% sodium azide..
Storage	Store at -20°C. Avoid repeated freeze-thaw cycles.
Protein Name	Sodium channel protein type 2 subunit alpha
Gene Name	SCN2A
Cellular localization	Cell membrane ; Multi-pass membrane protein .
Purification	The antibody was affinity-purified from rabbit antiserum by affinity-chromatography using epitope-specific immunogen.
Clonality	Polyclonal

Concentration	1 mg/ml
Observed band	
Human Gene ID	6326
Human Swiss-Prot Number	Q99250
Alternative Names	SCN2A; NAC2; SCN2A1; SCN2A2; Sodium channel protein type 2 subunit alpha; HBSC II; Sodium channel protein brain II subunit alpha; Sodium channel protein type II subunit alpha; Voltage-gated sodium channel subunit alpha Nav1.2
Background	Voltage-gated sodium channels are transmembrane glycoprotein complexes composed of a large alpha subunit with 24 transmembrane domains and one or more regulatory beta subunits. They are responsible for the generation and propagation of action potentials in neurons and muscle. This gene encodes one member of the sodium channel alpha subunit gene family. It is heterogeneously expressed in the brain, and mutations in this gene have been linked to several seizure disorders. Several alternatively spliced transcript variants of this gene have been described, but the full-length nature of some of these variants has not been determined. [provided by RefSeq, Jul 2008],



Immunohistochemical analysis of paraffin-embedded human tonsil. 1, Antibody was diluted at 1:200(4° overnight). 2, Tris-EDTA,pH9.0 was used for antigen retrieval. 3,Secondary antibody was diluted at 1:200(room temperature, 45min).