

Ribosomal Protein S25 rabbit pAb**Cat#: orb769982 (Manual)**

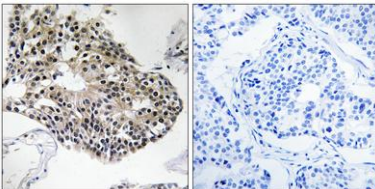
For research use only. Not intended for diagnostic use.

Product Name	Ribosomal Protein S25 rabbit pAb
Host species	Rabbit
Applications	IHC;IF;ELISA
Species Cross-Reactivity	Human;Mouse;Rat
Recommended dilutions	WB 1:500-2000 ,Immunohistochemistry: 1/100 - 1/300. ELISA: 1/10000. Not yet tested in other applications.
Immunogen	The antiserum was produced against synthesized peptide derived from human RPS25. AA range:76-125
Specificity	Ribosomal Protein S25 Polyclonal Antibody detects endogenous levels of Ribosomal Protein S25 protein.
Formulation	Liquid in PBS containing 50% glycerol, 0.5% BSA and 0.02% sodium azide..
Storage	Store at -20°C. Avoid repeated freeze-thaw cycles.
Protein Name	40S ribosomal protein S25
Gene Name	RPS25
Cellular localization	nucleus,nucleoplasm,nucleolus,cytoplasm,cytosol,ribosome,small ribosomal subunit,cytosolic small ribosomal subunit,extracellular matrix,extracellular exosome,
Purification	The antibody was affinity-purified from rabbit antiserum by affinity-chromatography using epitope-specific immunogen.

Clonality	Polyclonal
Concentration	1 mg/ml
Observed band	
Human Gene ID	6230
Human Swiss-Prot Number	P62851
Alternative Names	RPS25; 40S ribosomal protein S25

Background

Ribosomes, the organelles that catalyze protein synthesis, consist of a small 40S subunit and a large 60S subunit. Together these subunits are composed of 4 RNA species and approximately 80 structurally distinct proteins. This gene encodes a ribosomal protein that is a component of the 40S subunit. The protein belongs to the S25E family of ribosomal proteins. It is located in the cytoplasm. As is typical for genes encoding ribosomal proteins, there are multiple processed pseudogenes of this gene dispersed through the genome. [provided by RefSeq, Jul 2008],



Immunohistochemistry analysis of paraffin-embedded human breast carcinoma tissue, using RPS25 Antibody. The picture on the right is blocked with the synthesized peptide.