

## Ribosomal Protein S5 rabbit pAb

**Cat#: orb769950 (Manual)**

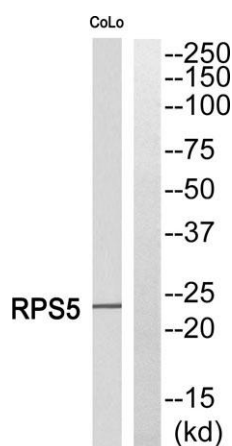
For research use only. Not intended for diagnostic use.

<b>Product Name</b>	Ribosomal Protein S5 rabbit pAb
<b>Host species</b>	Rabbit
<b>Applications</b>	WB;ELISA;IHC
<b>Species Cross-Reactivity</b>	Human;Mouse;Rat
<b>Recommended dilutions</b>	WB 1:500-2000;IHC-p 1:50-300; ELISA 2000-20000
<b>Immunogen</b>	Synthesized peptide derived from Ribosomal Protein S5 . at AA range: 60-140
<b>Specificity</b>	Ribosomal Protein S5 Polyclonal Antibody detects endogenous levels of Ribosomal Protein S5 protein.
<b>Formulation</b>	Liquid in PBS containing 50% glycerol, 0.5% BSA and 0.02% sodium azide..
<b>Storage</b>	Store at -20°C. Avoid repeated freeze-thaw cycles.
<b>Protein Name</b>	40S ribosomal protein S5
<b>Gene Name</b>	RPS5
<b>Cellular localization</b>	nucleoplasm,cytosol,focal adhesion,small ribosomal subunit,membrane,cytosolic small ribosomal subunit,intracellular ribonucleoprotein complex,extracellular matrix,extracellular exosome,
<b>Purification</b>	The antibody was affinity-purified from rabbit antiserum by affinity-chromatography using epitope-specific immunogen.

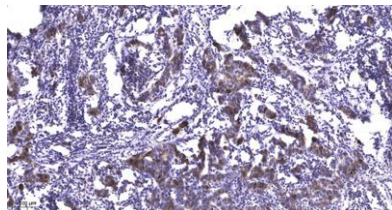
<b>Clonality</b>	Polyclonal
<b>Concentration</b>	1 mg/ml
<b>Observed band</b>	22kD
<b>Human Gene ID</b>	6193
<b>Human Swiss-Prot Number</b>	P46782
<b>Alternative Names</b>	RPS5; 40S ribosomal protein S5

### Background

Ribosomes, the organelles that catalyze protein synthesis, consist of a small 40S subunit and a large 60S subunit. Together these subunits are composed of 4 RNA species and approximately 80 structurally distinct proteins. This gene encodes a ribosomal protein that is a component of the 40S subunit. The protein belongs to the S7P family of ribosomal proteins. It is located in the cytoplasm. Variable expression of this gene in colorectal cancers compared to adjacent normal tissues has been observed, although no correlation between the level of expression and the severity of the disease has been found. As is typical for genes encoding ribosomal proteins, there are multiple processed pseudogenes of this gene dispersed through the genome. [provided by RefSeq, Jul 2008],



**Western blot analysis of RPS5 Antibody. The lane on the right is blocked with the RPS5 peptide.**



**Immunohistochemical analysis of paraffin-embedded human Breast cancer. 1, Antibody was diluted at 1:200(4° overnight). 2, Tris-EDTA,pH9.0 was used for antigen retrieval. 3,Secondary antibody was diluted at 1:200(room temperature, 45min).**