

**Ribosomal Protein L37 rabbit pAb****Cat#: orb769947 (Manual)**

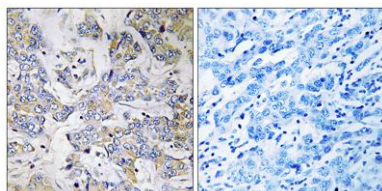
For research use only. Not intended for diagnostic use.

<b>Product Name</b>	Ribosomal Protein L37 rabbit pAb
<b>Host species</b>	Rabbit
<b>Applications</b>	IHC;IF;ELISA
<b>Species Cross-Reactivity</b>	Human;Mouse;Rat
<b>Recommended dilutions</b>	Immunohistochemistry: 1/100 - 1/300. ELISA: 1/10000. Not yet tested in other applications.
<b>Immunogen</b>	The antiserum was produced against synthesized peptide derived from human RPL37. AA range:21-70
<b>Specificity</b>	Ribosomal Protein L37 Polyclonal Antibody detects endogenous levels of Ribosomal Protein L37 protein.
<b>Formulation</b>	Liquid in PBS containing 50% glycerol, 0.5% BSA and 0.02% sodium azide..
<b>Storage</b>	Store at -20°C. Avoid repeated freeze-thaw cycles.
<b>Protein Name</b>	60S ribosomal protein L37
<b>Gene Name</b>	RPL37
<b>Cellular localization</b>	cytosol,ribosome,cytosolic large ribosomal subunit,
<b>Purification</b>	The antibody was affinity-purified from rabbit antiserum by affinity-chromatography using epitope-specific immunogen.
<b>Clonality</b>	Polyclonal

<b>Concentration</b>	1 mg/ml
<b>Observed band</b>	
<b>Human Gene ID</b>	6167
<b>Human Swiss-Prot Number</b>	P61927
<b>Alternative Names</b>	RPL37; 60S ribosomal protein L37; G1.16

## Background

Ribosomes, the organelles that catalyze protein synthesis, consist of a small 40S subunit and a large 60S subunit. Together these subunits are composed of 4 RNA species and approximately 80 structurally distinct proteins. This gene encodes a ribosomal protein that is a component of the 60S subunit. The protein belongs to the L37E family of ribosomal proteins. It is located in the cytoplasm. The protein contains a C2C2-type zinc finger-like motif. As is typical for genes encoding ribosomal proteins, there are multiple processed pseudogenes of this gene dispersed through the genome. [provided by RefSeq, Jul 2008],



**Immunohistochemistry analysis of paraffin-embedded human breast carcinoma tissue, using RPL37 Antibody. The picture on the right is blocked with the synthesized peptide.**