

## Ribosomal Protein L11 rabbit pAb

**Cat#: orb769943 (Manual)**

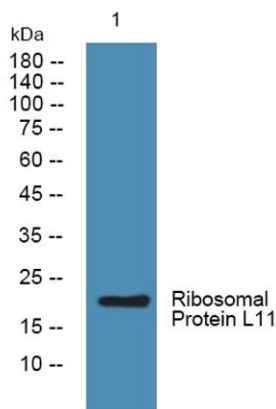
For research use only. Not intended for diagnostic use.

<b>Product Name</b>	Ribosomal Protein L11 rabbit pAb
<b>Host species</b>	Rabbit
<b>Applications</b>	WB;ELISA;IHC
<b>Species Cross-Reactivity</b>	Human;Mouse;Rat
<b>Recommended dilutions</b>	WB 1:500-2000;IHC-p 1:50-300; ELISA 2000-20000
<b>Immunogen</b>	Synthesized peptide derived from Ribosomal Protein L11 . at AA range: 100-180
<b>Specificity</b>	Ribosomal Protein L11 Polyclonal Antibody detects endogenous levels of Ribosomal Protein L11 protein.
<b>Formulation</b>	Liquid in PBS containing 50% glycerol, 0.5% BSA and 0.02% sodium azide..
<b>Storage</b>	Store at -20°C. Avoid repeated freeze-thaw cycles.
<b>Protein Name</b>	60S ribosomal protein L11
<b>Gene Name</b>	RPL11
<b>Cellular localization</b>	Nucleus, nucleolus . Cytoplasm .
<b>Purification</b>	The antibody was affinity-purified from rabbit antiserum by affinity-chromatography using epitope-specific immunogen.
<b>Clonality</b>	Polyclonal

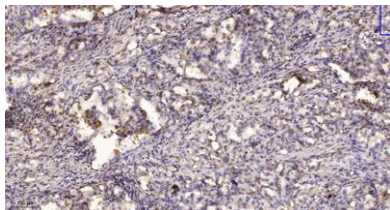
<b>Concentration</b>	1 mg/ml
<b>Observed band</b>	20kD
<b>Human Gene ID</b>	6135
<b>Human Swiss-Prot Number</b>	P62913
<b>Alternative Names</b>	RPL11; 60S ribosomal protein L11; CLL-associated antigen KW-12

### Background

Ribosomes, the organelles that catalyze protein synthesis, consist of a small 40S subunit and a large 60S subunit. Together these subunits are composed of 4 RNA species and approximately 80 structurally distinct proteins. This gene encodes a ribosomal protein that is a component of the 60S subunit. The protein belongs to the L5P family of ribosomal proteins. It is located in the cytoplasm. The protein probably associates with the 5S rRNA. Alternatively spliced transcript variants encoding different isoforms have been found for this gene. As is typical for genes encoding ribosomal proteins, there are multiple processed pseudogenes of this gene dispersed through the genome. [provided by RefSeq, Dec 2010],



**Western blot analysis of lysates from A431 cells, primary antibody was diluted at 1:1000, 4° over night**



**Immunohistochemical analysis of paraffin-embedded human lung cancer. 1, Antibody was diluted at 1:200(4° overnight). 2, Tris-EDTA,pH9.0 was used for antigen retrieval. 3,Secondary antibody was diluted at 1:200(room temperature, 45min).**