

Ribosomal Protein L5 rabbit pAb

Cat#: orb769939 (Manual)

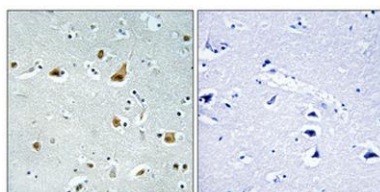
For research use only. Not intended for diagnostic use.

Product Name	Ribosomal Protein L5 rabbit pAb
Host species	Rabbit
Applications	WB;IP;IHC;IF;ELISA
Species Cross-Reactivity	Human;Mouse;Rat
Recommended dilutions	WB 1:500-2000;IP 1:50-200;IHC-p 1:100-500;IF/ICC 1:100-500;ELISA 1:5000-20000
Immunogen	The antiserum was produced against synthesized peptide derived from human RPL5. AA range:161-210
Specificity	Ribosomal Protein L5 Polyclonal Antibody detects endogenous levels of Ribosomal Protein L5 protein.
Formulation	Liquid in PBS containing 50% glycerol, 0.5% BSA and 0.02% sodium azide..
Storage	Store at -20°C. Avoid repeated freeze-thaw cycles.
Protein Name	60S ribosomal protein L5
Gene Name	RPL5
Cellular localization	Cytoplasm . Nucleus, nucleolus .
Purification	The antibody was affinity-purified from rabbit antiserum by affinity-chromatography using epitope-specific immunogen.
Clonality	Polyclonal

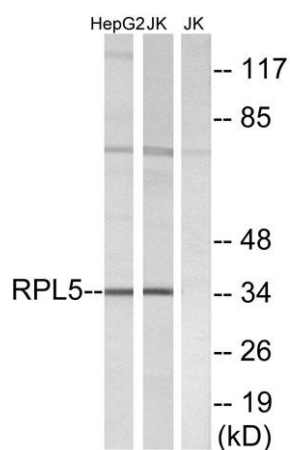
Concentration	1 mg/ml
Observed band	34kD
Human Gene ID	6125
Human Swiss-Prot Number	P46777
Alternative Names	RPL5; MSTP030; 60S ribosomal protein L5

Background

Ribosomes, the organelles that catalyze protein synthesis, consist of a small 40S subunit and a large 60S subunit. Together these subunits are composed of 4 RNA species and approximately 80 structurally distinct proteins. This gene encodes a ribosomal protein that is a component of the 60S subunit. The protein belongs to the L18P family of ribosomal proteins. It is located in the cytoplasm. The protein binds 5S rRNA to form a stable complex called the 5S ribonucleoprotein particle (RNP), which is necessary for the transport of nonribosome-associated cytoplasmic 5S rRNA to the nucleolus for assembly into ribosomes. The protein interacts specifically with the beta subunit of casein kinase II. Variable expression of this gene in colorectal cancers compared to adjacent normal tissues has been observed, although no correlation between the level of expression and the severity of the disease has been found



Immunohistochemical analysis of paraffin-embedded Human brain. Antibody was diluted at 1:100(4° overnight). High-pressure and temperature Tris-EDTA,pH8.0 was used for antigen retrieval. Negative ctrl (right) obtained from antibody was pre-absorbed by i



Western blot analysis of lysates from Jurkat and HepG2 cells, using RPL5 Antibody. The lane on the right is blocked with the synthesized peptide.