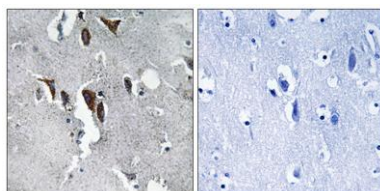


**ELOVL5 rabbit pAb****Cat#: orb769927 (Manual)**

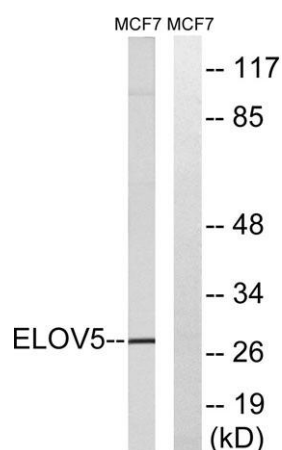
For research use only. Not intended for diagnostic use.

<b>Product Name</b>	ELOVL5 rabbit pAb
<b>Host species</b>	Rabbit
<b>Applications</b>	WB;IHC;IF;ELISA
<b>Species Cross-Reactivity</b>	Human;Rat;Mouse;
<b>Recommended dilutions</b>	Western Blot: 1/500 - 1/2000. Immunohistochemistry: 1/100 - 1/300. ELISA: 1/40000. Not yet tested in other applications.
<b>Immunogen</b>	The antiserum was produced against synthesized peptide derived from human ELOVL5. AA range:250-299
<b>Specificity</b>	ELOVL5 Polyclonal Antibody detects endogenous levels of ELOVL5 protein.
<b>Formulation</b>	Liquid in PBS containing 50% glycerol, 0.5% BSA and 0.02% sodium azide..
<b>Storage</b>	Store at -20°C. Avoid repeated freeze-thaw cycles.
<b>Protein Name</b>	Elongation of very long chain fatty acids protein 5
<b>Gene Name</b>	ELOVL5
<b>Cellular localization</b>	Endoplasmic reticulum membrane ; Multi-pass membrane protein . Cell projection, dendrite . In Purkinje cells, the protein localizes to the soma and proximal portion of the dendritic tree. .
<b>Purification</b>	The antibody was affinity-purified from rabbit antiserum by affinity-chromatography using epitope-specific immunogen.

<b>Clonality</b>	Polyclonal
<b>Concentration</b>	1 mg/ml
<b>Observed band</b>	28kD
<b>Human Gene ID</b>	60481
<b>Human Swiss-Prot Number</b>	Q9NYP7
<b>Alternative Names</b>	ELOVL5; ELOVL2; Elongation of very long chain fatty acids protein 5; 3-keto acyl-CoA synthase ELOVL5; ELOVL fatty acid elongase 5; ELOVL FA elongase 5; Fatty acid elongase 1; hELO1
<b>Background</b>	This gene belongs to the ELO family. It is highly expressed in the adrenal gland and testis, and encodes a multi-pass membrane protein that is localized in the endoplasmic reticulum. This protein is involved in the elongation of long-chain polyunsaturated fatty acids. Mutations in this gene have been associated with spinocerebellar ataxia-38 (SCA38). Alternatively spliced transcript variants have been found for this gene. [provided by RefSeq, Sep 2014],



**Immunohistochemistry analysis of paraffin-embedded human brain tissue, using ELOVL5 Antibody. The picture on the right is blocked with the synthesized peptide.**



Western blot analysis of lysates from MCF-7 cells, using ELOVL5 Antibody. The lane on the right is blocked with the synthesized peptide.