

RGS7 rabbit pAb

Cat#: orb769917 (Manual)

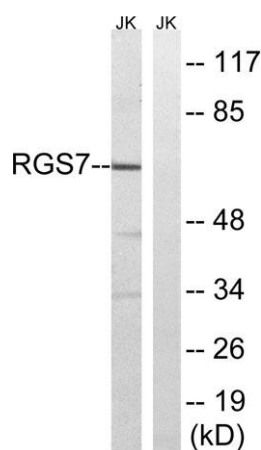
For research use only. Not intended for diagnostic use.

Product Name	RGS7 rabbit pAb
Host species	Rabbit
Applications	WB;ELISA;IHC
Species Cross-Reactivity	Human;Mouse;Rat
Recommended dilutions	WB 1:500-2000;IHC-p 1:50-300; ELISA 2000-20000
Immunogen	The antiserum was produced against synthesized peptide derived from human RGS7. AA range:155-204
Specificity	RGS7 Polyclonal Antibody detects endogenous levels of RGS7 protein.
Formulation	Liquid in PBS containing 50% glycerol, 0.5% BSA and 0.02% sodium azide..
Storage	Store at -20°C. Avoid repeated freeze-thaw cycles.
Protein Name	Regulator of G-protein signaling 7
Gene Name	RGS7
Cellular localization	Cytoplasm, cytosol . Cytoplasm . Cell membrane . Membrane ; Peripheral membrane protein ; Cytoplasmic side . Interaction with PKD1 promotes location at the cell membrane (PubMed:10339594). Interaction with RGS7BP promotes location at the cell membrane (Pu
Purification	The antibody was affinity-purified from rabbit antiserum by affinity-chromatography using epitope-specific immunogen.

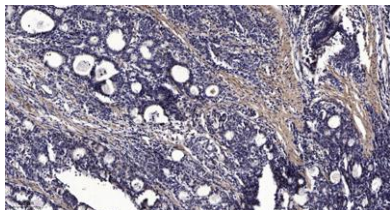
Clonality	Polyclonal
Concentration	1 mg/ml
Observed band	65kD
Human Gene ID	6000
Human Swiss-Prot Number	P49802
Alternative Names	RGS7; Regulator of G-protein signaling 7; RGS7

Background

function:Inhibits signal transduction by increasing the GTPase activity of G protein alpha subunits thereby driving them into their inactive GDP-bound form. Activity on G(o)-alpha is specifically enhanced by the RGS6/GNG5 dimer. May play a role in synaptic vesicle exocytosis. May play important role in the rapid regulation of neuronal excitability and the cellular responses to short-lived stimulations.,PTM:Palmitoylated.,PTM:Phosphorylation and subsequent interaction with 14-3-3 proteins inhibits GAP activity.,similarity:Contains 1 DEP domain.,similarity:Contains 1 G protein gamma domain.,similarity:Contains 1 RGS domain.,subunit:Heterodimer with GNG5. Interacts with RGS7BP, leading to regulate the subcellular location of the heterodimer formed with Gbeta5 (By similarity). Interacts with 14-3-3 protein Tau and SNAP25BP.,



Western blot analysis of lysates from Jurkat cells, using RGS7 Antibody. The lane on the right is blocked with the synthesized peptide.



Immunohistochemical analysis of paraffin-embedded human Gastric adenocarcinoma. 1, Antibody was diluted at 1:200(4° overnight). 2, Tris-EDTA,pH9.0 was used for antigen retrieval. 3,Secondary antibody was diluted at 1:200(room temperature, 45min).