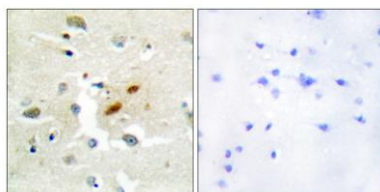


DNA pol ζ rabbit pAb**Cat#: orb769913 (Manual)**

For research use only. Not intended for diagnostic use.

Product Name	DNA pol ζ rabbit pAb
Host species	Rabbit
Applications	IHC;IF;ELISA
Species Cross-Reactivity	Human;Mouse
Recommended dilutions	Immunohistochemistry: 1/100 - 1/300. ELISA: 1/20000. Not yet tested in other applications.
Immunogen	The antiserum was produced against synthesized peptide derived from human DNA Polymerase zeta. AA range:231-280
Specificity	DNA pol ζ Polyclonal Antibody detects endogenous levels of DNA pol ζ protein.
Formulation	Liquid in PBS containing 50% glycerol, 0.5% BSA and 0.02% sodium azide..
Storage	Store at -20°C. Avoid repeated freeze-thaw cycles.
Protein Name	DNA polymerase zeta catalytic subunit
Gene Name	REV3L
Cellular localization	Nucleus .
Purification	The antibody was affinity-purified from rabbit antiserum by affinity-chromatography using epitope-specific immunogen.
Clonality	Polyclonal

Concentration	1 mg/ml
Observed band	
Human Gene ID	5980
Human Swiss-Prot Number	O60673
Alternative Names	REV3L; POLZ; REV3; DNA polymerase zeta catalytic subunit; Protein reversionless 3-like; REV3-like; hREV3
Background	<p>catalytic activity:Deoxynucleoside triphosphate + DNA(n) = diphosphate + DNA(n+1).,domain:Its C-terminal part could serve as the catalytic domain during nucleotide polymerization, while its N-terminal part could provide sites for protein-protein interactions with other factors during translesion DNA synthesis.,similarity:Belongs to the DNA polymerase type-B family.,subunit:Interacts with REV7.,tissue specificity:Ubiquitously expressed.,</p>



Immunohistochemistry analysis of paraffin-embedded human brain tissue, using DNA Polymerase zeta Antibody. The picture on the right is blocked with the synthesized peptide.