

Recoverin rabbit pAb

Cat#: orb769893 (Manual)

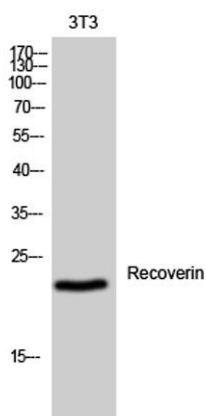
For research use only. Not intended for diagnostic use.

Product Name	Recoverin rabbit pAb
Host species	Rabbit
Applications	WB;IHC;IF;ELISA
Species Cross-Reactivity	Human;Mouse
Recommended dilutions	Western Blot: 1/500 - 1/2000. Immunohistochemistry: 1/100 - 1/300. Immunofluorescence: 1/200 - 1/1000. ELISA: 1/20000. Not yet tested in other applications.
Immunogen	The antiserum was produced against synthesized peptide derived from human Recoverin. AA range:107-156
Specificity	Recoverin Polyclonal Antibody detects endogenous levels of Recoverin protein.
Formulation	Liquid in PBS containing 50% glycerol, 0.5% BSA and 0.02% sodium azide..
Storage	Store at -20°C. Avoid repeated freeze-thaw cycles.
Protein Name	Recoverin
Gene Name	RCVRN
Cellular localization	Photoreceptor inner segment . Cell projection, cilium, photoreceptor outer segment . Photoreceptor outer segment membrane ; Lipid-anchor ; Cytoplasmic side . Perikaryon . Primarily expressed in the inner segments of light-adapted rod photoreceptors, approximately 10% of which translocates from photoreceptor outer segments upon light stimulation (By similarity). Targeting of myristoylated protein to rod photoreceptor outer segments is calcium dependent (By similarity). .

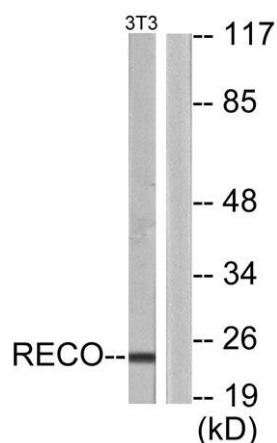
Purification	The antibody was affinity-purified from rabbit antiserum by affinity-chromatography using epitope-specific immunogen.
Clonality	Polyclonal
Concentration	1 mg/ml
Observed band	23kD
Human Gene ID	5957
Human Swiss-Prot Number	P35243
Alternative Names	RCVRN; RCV1; Recoverin; Cancer-associated retinopathy protein; Protein CAR

Background

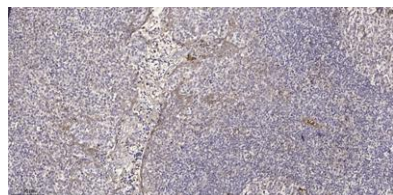
This gene encodes a member of the recoverin family of neuronal calcium sensors. The encoded protein contains three calcium-binding EF-hand domains and may prolong the termination of the phototransduction cascade in the retina by blocking the phosphorylation of photo-activated rhodopsin. Recoverin may be the antigen responsible for cancer-associated retinopathy. [provided by RefSeq, Jul 2008],



Western Blot analysis of 3T3 cells using Recoverin Polyclonal Antibody



Western blot analysis of lysates from NIH/3T3 cells, using Recoverin Antibody. The lane on the right is blocked with the synthesized peptide.



Immunohistochemical analysis of paraffin-embedded human tonsil. 1, Antibody was diluted at 1:200(4° overnight). 2, Tris-EDTA,pH9.0 was used for antigen retrieval. 3,Secondary antibody was diluted at 1:200(room temperature, 30min).