

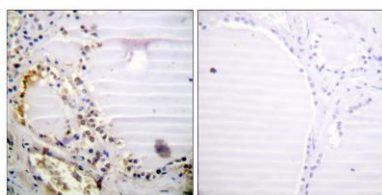
CtIP rabbit pAb

Cat#: orb769884 (Manual)

For research use only. Not intended for diagnostic use.

| | |
|---------------------------------|---|
| Product Name | CtIP rabbit pAb |
| Host species | Rabbit |
| Applications | IHC;IF;ELISA |
| Species Cross-Reactivity | Human;Mouse |
| Recommended dilutions | Immunohistochemistry: 1/100 - 1/300. ELISA: 1/5000. Not yet tested in other applications. |
| Immunogen | The antiserum was produced against synthesized peptide derived from human RBBP8. AA range:630-679 |
| Specificity | CtIP Polyclonal Antibody detects endogenous levels of CtIP protein. |
| Formulation | Liquid in PBS containing 50% glycerol, 0.5% BSA and 0.02% sodium azide.. |
| Storage | Store at -20°C. Avoid repeated freeze-thaw cycles. |
| Protein Name | DNA endonuclease RBBP8 |
| Gene Name | RBBP8 |
| Cellular localization | Nucleus . Chromosome . Associates with sites of DNA damage in S/G2 phase (PubMed:10764811, PubMed:25349192). Ubiquitinated RBBP8 binds to chromatin following DNA damage (PubMed:16818604). . |
| Purification | The antibody was affinity-purified from rabbit antiserum by affinity-chromatography using epitope-specific immunogen. |

| | |
|--------------------------------|---|
| Clonality | Polyclonal |
| Concentration | 1 mg/ml |
| Observed band | |
| Human Gene ID | 5932 |
| Human Swiss-Prot Number | Q99708 |
| Alternative Names | RBBP8; CtIP; DNA endonuclease RBBP8; CtBP-interacting protein; CtIP; Retinoblastoma-binding protein 8; RBBP-8; Retinoblastoma-interacting protein and myosin-like; RIM; Sporulation in the absence of SPO11 protein 2 homolog; SAE2 |
| Background | The protein encoded by this gene is a ubiquitously expressed nuclear protein. It is found among several proteins that bind directly to retinoblastoma protein, which regulates cell proliferation. This protein complexes with transcriptional co-repressor CTBP. It is also associated with BRCA1 and is thought to modulate the functions of BRCA1 in transcriptional regulation, DNA repair, and/or cell cycle checkpoint control. It is suggested that this gene may itself be a tumor suppressor acting in the same pathway as BRCA1. Three transcript variants encoding two different isoforms have been found for this gene. More transcript variants exist, but their full-length natures have not been determined. [provided by RefSeq, Jul 2008], |



Immunohistochemistry analysis of paraffin-embedded human thyroid gland tissue, using RBBP8 Antibody. The picture on the right is blocked with the synthesized peptide.