

RBQ-3 rabbit pAb**Cat#: orb769883 (Manual)**

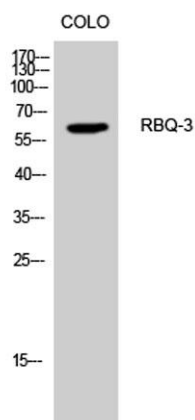
For research use only. Not intended for diagnostic use.

Product Name	RBQ-3 rabbit pAb
Host species	Rabbit
Applications	WB;IHC
Species Cross-Reactivity	Human;Mouse;Rat
Recommended dilutions	WB 1:500-2000;IHC-p 1:50-300
Immunogen	Synthesized peptide derived from RBQ-3 . at AA range: 190-270
Specificity	RBQ-3 Polyclonal Antibody detects endogenous levels of RBQ-3 protein.
Formulation	Liquid in PBS containing 50% glycerol, 0.5% BSA and 0.02% sodium azide..
Storage	Store at -20°C. Avoid repeated freeze-thaw cycles.
Protein Name	Retinoblastoma-binding protein 5
Gene Name	RBBP5
Cellular localization	Nucleus .
Purification	The antibody was affinity-purified from rabbit antiserum by affinity-chromatography using epitope-specific immunogen.
Clonality	Polyclonal

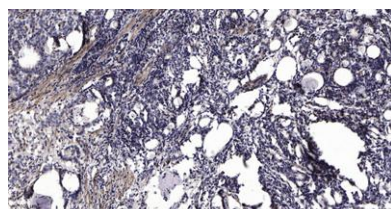
Concentration	1 mg/ml
Observed band	59kD
Human Gene ID	5929
Human Swiss-Prot Number	Q15291
Alternative Names	RBBP5; RBQ3; Retinoblastoma-binding protein 5; RBBP-5; Retinoblastoma-binding protein RBQ-3

Background

This gene encodes a ubiquitously expressed nuclear protein which belongs to a highly conserved subfamily of WD-repeat proteins. The encoded protein binds directly to retinoblastoma protein, which regulates cell proliferation. It interacts preferentially with the underphosphorylated retinoblastoma protein via the E1A-binding pocket B. Three alternatively spliced transcript variants that encode different protein isoforms have been described for this gene. [provided by RefSeq, Jul 2010],



Western Blot analysis of CoLo cells using RBQ-3 Polyclonal Antibody cells nucleus extracted by Minute TM Cytoplasmic and Nuclear Fractionation kit (SC-003, Invent biotech, MN, USA).



Immunohistochemical analysis of paraffin-embedded human Gastric adenocarcinoma. 1, Antibody was diluted at 1:200 (4° overnight). 2, Tris-EDTA, pH 9.0 was used for antigen retrieval. 3, Secondary antibody was diluted at 1:200 (room temperature, 45 min).



Explore. Bioreagents.

www.biorbyt.com