

Rad21 rabbit pAb

Cat#: orb769843 (Manual)

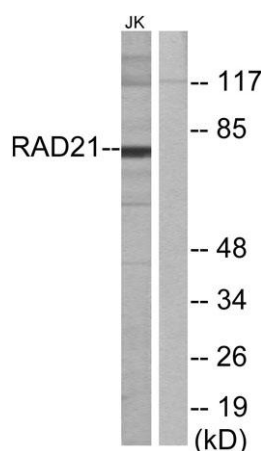
For research use only. Not intended for diagnostic use.

Product Name	Rad21 rabbit pAb
Host species	Rabbit
Applications	WB;IHC;IF;ELISA
Species Cross-Reactivity	Human;Mouse
Recommended dilutions	Western Blot: 1/500 - 1/2000. Immunohistochemistry: 1/100 - 1/300. Immunofluorescence: 1/200 - 1/1000. ELISA: 1/5000. Not yet tested in other applications.
Immunogen	The antiserum was produced against synthesized peptide derived from human RAD21. AA range:521-570
Specificity	Rad21 Polyclonal Antibody detects endogenous levels of Rad21 protein.
Formulation	Liquid in PBS containing 50% glycerol, 0.5% BSA and 0.02% sodium azide..
Storage	Store at -20°C. Avoid repeated freeze-thaw cycles.
Protein Name	Double-strand-break repair protein rad21 homolog
Gene Name	RAD21
Cellular localization	[Double-strand-break repair protein rad21 homolog]: Nucleus . Nucleus matrix . Chromosome . Chromosome, centromere . Cytoplasm, cytoskeleton, spindle pole . Associates with chromatin (PubMed:11590136, PubMed:11073952). Before prophase, scattered along chr
Purification	The antibody was affinity-purified from rabbit antiserum by affinity-chromatography using epitope-specific immunogen.

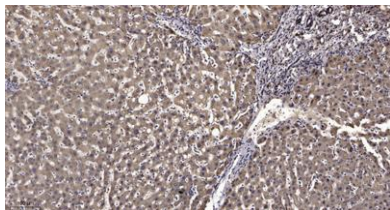
Clonality	Polyclonal
Concentration	1 mg/ml
Observed band	72kD
Human Gene ID	5885
Human Swiss-Prot Number	O60216
Alternative Names	RAD21; HR21; KIAA0078; NXP1; Double-strand-break repair protein rad21 homolog; hHR21; Nuclear matrix protein 1; NXP-1; SCC1 homolog

Background

The protein encoded by this gene is highly similar to the gene product of *Schizosaccharomyces pombe* rad21, a gene involved in the repair of DNA double-strand breaks, as well as in chromatid cohesion during mitosis. This protein is a nuclear phospho-protein, which becomes hyperphosphorylated in cell cycle M phase. The highly regulated association of this protein with mitotic chromatin specifically at the centromere region suggests its role in sister chromatid cohesion in mitotic cells. [provided by RefSeq, Jul 2008],



Western blot analysis of lysates from Jurkat cells, using RAD21 Antibody. The lane on the right is blocked with the synthesized peptide.



Immunohistochemical analysis of paraffin-embedded human liver cancer. 1, Antibody was diluted at 1:200(4° overnight). 2, Tris-EDTA,pH9.0 was used for antigen retrieval. 3,Secondary antibody was diluted at 1:200(room temperature, 45min).