

PTP IA-2 β rabbit pAb**Cat#: orb769818 (Manual)**

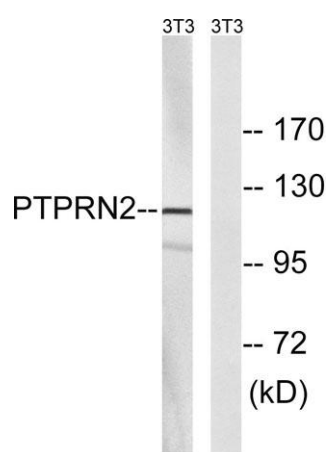
For research use only. Not intended for diagnostic use.

Product Name	PTP IA-2 β rabbit pAb
Host species	Rabbit
Applications	WB;ELISA;IHC
Species Cross-Reactivity	Human;Mouse;Rat
Recommended dilutions	WB 1:500-2000;IHC-p 1:50-300; ELISA 2000-20000
Immunogen	The antiserum was produced against synthesized peptide derived from human PTPRN2. AA range:206-255
Specificity	PTP IA-2 β Polyclonal Antibody detects endogenous levels of PTP IA-2 β protein.
Formulation	Liquid in PBS containing 50% glycerol, 0.5% BSA and 0.02% sodium azide..
Storage	Store at -20°C. Avoid repeated freeze-thaw cycles.
Protein Name	Receptor-type tyrosine-protein phosphatase N2
Gene Name	PTPRN2
Cellular localization	Cytoplasmic vesicle, secretory vesicle membrane ; Single-pass type I membrane protein . Cytoplasmic vesicle, secretory vesicle, synaptic vesicle membrane ; Single-pass type I membrane protein . Predominantly found on dense-core secretory granules. Sorting
Purification	The antibody was affinity-purified from rabbit antiserum by affinity-chromatography using epitope-specific immunogen.

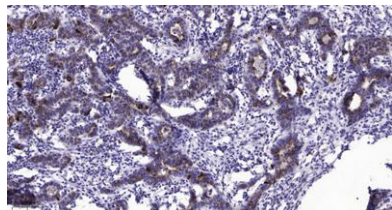
Clonality	Polyclonal
Concentration	1 mg/ml
Observed band	111kD
Human Gene ID	5799
Human Swiss-Prot Number	Q92932
Alternative Names	PTPRN2; KIAA0387; Receptor-type tyrosine-protein phosphatase N2; R-PTP-N2; Islet cell autoantigen-related protein; IAR; ICAAR; Phogrin

Background

This gene encodes a protein with sequence similarity to receptor-like protein tyrosine phosphatases. However, tyrosine phosphatase activity has not been experimentally validated for this protein. Studies of the rat ortholog suggest that the encoded protein may instead function as a phosphatidylinositol phosphatase with the ability to dephosphorylate phosphatidylinositol 3-phosphate and phosphatidylinositol 4,5-diphosphate, and this function may be involved in the regulation of insulin secretion. This protein has been identified as an autoantigen in insulin-dependent diabetes mellitus. Alternative splicing results in multiple transcript variants. [provided by RefSeq, Feb 2015],



Western blot analysis of lysates from NIH/3T3 cells, using PTPRN2 Antibody. The lane on the right is blocked with the synthesized peptide.



Immunohistochemical analysis of paraffin-embedded human Breast cancer. 1, Antibody was diluted at 1:200(4° overnight). 2, Tris-EDTA,pH9.0 was used for antigen retrieval. 3,Secondary antibody was diluted at 1:200(room temperature, 45min).