

**ARHGAP23 rabbit pAb****Cat#: orb769801 (Manual)**

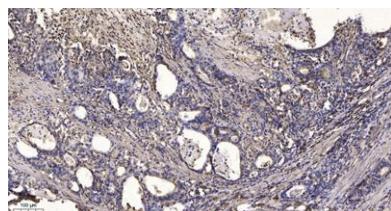
For research use only. Not intended for diagnostic use.

<b>Product Name</b>	ARHGAP23 rabbit pAb
<b>Host species</b>	Rabbit
<b>Applications</b>	IHC;IF;WB;ELISA
<b>Species Cross-Reactivity</b>	Human;Rat;Mouse;
<b>Recommended dilutions</b>	WB 1:500-2000 Immunohistochemistry: 1/100 - 1/300. ELISA: 1/40000. Not yet tested in other applications.
<b>Immunogen</b>	Synthesized peptide derived from ARHGAP23 . at AA range: 470-550
<b>Specificity</b>	ARHGAP23 Polyclonal Antibody detects endogenous levels of ARHGAP23 protein.
<b>Formulation</b>	Liquid in PBS containing 50% glycerol, 0.5% BSA and 0.02% sodium azide..
<b>Storage</b>	Store at -20°C. Avoid repeated freeze-thaw cycles.
<b>Protein Name</b>	Rho GTPase-activating protein 23
<b>Gene Name</b>	ARHGAP23
<b>Cellular localization</b>	cytosol,extracellular exosome,
<b>Purification</b>	The antibody was affinity-purified from rabbit antiserum by affinity-chromatography using epitope-specific immunogen.
<b>Clonality</b>	Polyclonal

<b>Concentration</b>	1 mg/ml
<b>Observed band</b>	
<b>Human Gene ID</b>	57636
<b>Human Swiss-Prot Number</b>	Q9P227
<b>Alternative Names</b>	ARHGAP23; KIAA1501; Rho GTPase-activating protein 23; Rho-type GTPase-activating protein 23

### Background

The RHO (see ARHA; MIM 165390) family of small GTPases are involved in signal transduction through transmembrane receptors, and they are inactive in the GDP-bound form and active in the GTP-bound form. GTPase-activating proteins, such as ARHGAP23, inactivate RHO family proteins by stimulating their hydrolysis of GTP (Katoh and Katoh, 2004 [PubMed 15254754]).[supplied by OMIM, Mar 2008],



Immunohistochemical analysis of paraffin-embedded human Gastric adenocarcinoma. 1, Antibody was diluted at 1:200(4° overnight). 2, Tris-EDTA,pH9.0 was used for antigen retrieval. 3,Secondary antibody was diluted at 1:200(room temperature, 45min).