

BEGAIN rabbit pAb**Cat#: orb769798 (Manual)**

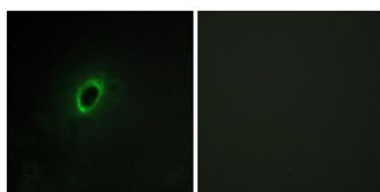
For research use only. Not intended for diagnostic use.

Product Name	BEGAIN rabbit pAb
Host species	Rabbit
Applications	WB;IHC;IF;ELISA
Species Cross-Reactivity	Human;Mouse;Rat
Recommended dilutions	Western Blot: 1/500 - 1/2000. Immunohistochemistry: 1/100 - 1/300. Immunofluorescence: 1/200 - 1/1000. ELISA: 1/5000. Not yet tested in other applications.
Immunogen	The antiserum was produced against synthesized peptide derived from human BEGIN. AA range:511-560
Specificity	BEGAIN Polyclonal Antibody detects endogenous levels of BEGAIN protein.
Formulation	Liquid in PBS containing 50% glycerol, 0.5% BSA and 0.02% sodium azide..
Storage	Store at -20°C. Avoid repeated freeze-thaw cycles.
Protein Name	Brain-enriched guanylate kinase-associated protein
Gene Name	BEGAIN
Cellular localization	Cytoplasm . Membrane ; Peripheral membrane protein .
Purification	The antibody was affinity-purified from rabbit antiserum by affinity-chromatography using epitope-specific immunogen.
Clonality	Polyclonal

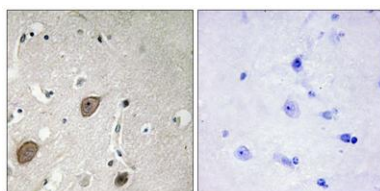
Concentration	1 mg/ml
Observed band	65kD
Human Gene ID	57596
Human Swiss-Prot Number	Q9BUH8
Alternative Names	BEGAIN; KIAA1446; Brain-enriched guanylate kinase-associated protein

Background

function:May sustain the structure of the postsynaptic density (PSD).,PTM:Phosphorylated upon DNA damage, probably by ATM or ATR.,subunit:Interacts with DLG4 and DLGAP1 and forms a ternary complex.,



Immunofluorescence analysis of HeLa cells, using BEGIN Antibody. The picture on the right is blocked with the synthesized peptide.



Immunohistochemistry analysis of paraffin-embedded human brain tissue, using BEGIN Antibody. The picture on the right is blocked with the synthesized peptide.