

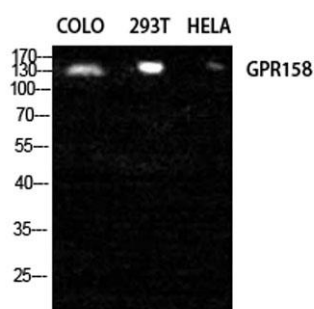
GPR158 rabbit pAb**Cat#: orb769787 (Manual)**

For research use only. Not intended for diagnostic use.

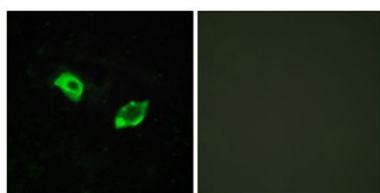
Product Name	GPR158 rabbit pAb
Host species	Rabbit
Applications	WB;IHC;IF;ELISA
Species Cross-Reactivity	Human;Mouse
Recommended dilutions	Western Blot: 1/500 - 1/2000. Immunohistochemistry: 1/100 - 1/300. Immunofluorescence: 1/200 - 1/1000. ELISA: 1/5000. Not yet tested in other applications.
Immunogen	The antiserum was produced against synthesized peptide derived from human GPR158. AA range:1-50
Specificity	GPR158 Polyclonal Antibody detects endogenous levels of GPR158 protein.
Formulation	Liquid in PBS containing 50% glycerol, 0.5% BSA and 0.02% sodium azide..
Storage	Store at -20°C. Avoid repeated freeze-thaw cycles.
Protein Name	Probable G-protein coupled receptor 158
Gene Name	GPR158
Cellular localization	Cell membrane; Multi-pass membrane protein.
Purification	The antibody was affinity-purified from rabbit antiserum by affinity-chromatography using epitope-specific immunogen.
Clonality	Polyclonal

Concentration	1 mg/ml
Observed band	150kD
Human Gene ID	57512
Human Swiss-Prot Number	Q5T848
Alternative Names	GPR158; KIAA1136; Probable G-protein coupled receptor 158

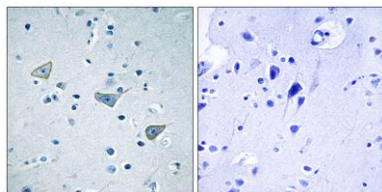
Background function:Orphan receptor.,similarity:Belongs to the G-protein coupled receptor 3 family.,



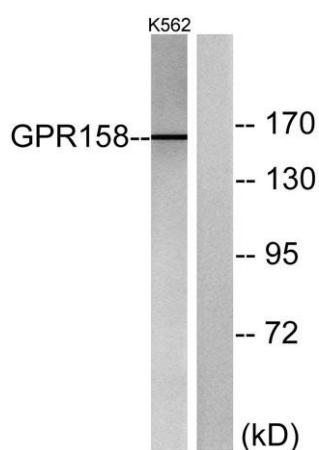
Western Blot analysis of COLO 293T HELA cells using GPR158 Polyclonal Antibody diluted at 1:2000



Immunofluorescence analysis of HUVEC cells, using GPR158 Antibody. The picture on the right is blocked with the synthesized peptide.



Immunohistochemistry analysis of paraffin-embedded human brain tissue, using GPR158 Antibody. The picture on the right is blocked with the synthesized peptide.



Western blot analysis of lysates from K562 cells, using GPR158 Antibody. The lane on the right is blocked with the synthesized peptide.