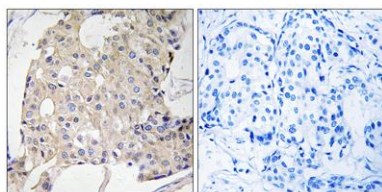


NDRG3 rabbit pAb**Cat#: orb769770 (Manual)**

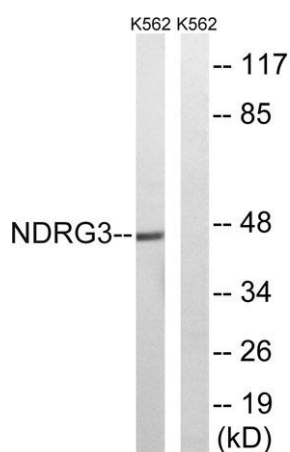
For research use only. Not intended for diagnostic use.

Product Name	NDRG3 rabbit pAb
Host species	Rabbit
Applications	WB;IHC;IF;ELISA
Species Cross-Reactivity	Human;Mouse;Rat
Recommended dilutions	Western Blot: 1/500 - 1/2000. Immunohistochemistry: 1/100 - 1/300. ELISA: 1/40000. Not yet tested in other applications.
Immunogen	The antiserum was produced against synthesized peptide derived from human NDRG3. AA range:206-255
Specificity	NDRG3 Polyclonal Antibody detects endogenous levels of NDRG3 protein.
Formulation	Liquid in PBS containing 50% glycerol, 0.5% BSA and 0.02% sodium azide..
Storage	Store at -20°C. Avoid repeated freeze-thaw cycles.
Protein Name	Protein NDRG3
Gene Name	NDRG3
Cellular localization	cytoplasm,extracellular exosome,
Purification	The antibody was affinity-purified from rabbit antiserum by affinity-chromatography using epitope-specific immunogen.
Clonality	Polyclonal

Concentration	1 mg/ml
Observed band	45kD
Human Gene ID	57446
Human Swiss-Prot Number	Q9UGV2
Alternative Names	NDRG3; Protein NDRG3; N-myc downstream-regulated gene 3 protein
Background	similarity:Belongs to the NDRG family.,tissue specificity:Ubiquitous. Highly expressed in brain.,



Immunohistochemistry analysis of paraffin-embedded human breast carcinoma tissue, using NDRG3 Antibody. The picture on the right is blocked with the synthesized peptide.



Western blot analysis of lysates from K562 cells, using NDRG3 Antibody. The lane on the right is blocked with the synthesized peptide.