

IP Receptor rabbit pAb**Cat#: orb769766 (Manual)**

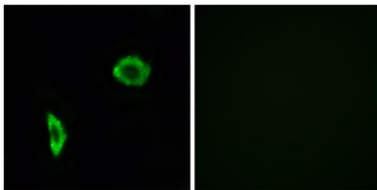
For research use only. Not intended for diagnostic use.

Product Name	IP Receptor rabbit pAb
Host species	Rabbit
Applications	WB;ELISA;IHC
Species Cross-Reactivity	Human;Rat;Mouse;
Recommended dilutions	WB 1:500-2000;IHC-p 1:50-300; ELISA 2000-20000
Immunogen	The antiserum was produced against synthesized peptide derived from human Prostacyclin Receptor. AA range:198-247
Specificity	IP Receptor Polyclonal Antibody detects endogenous levels of IP Receptor protein.
Formulation	Liquid in PBS containing 50% glycerol, 0.5% BSA and 0.02% sodium azide..
Storage	Store at -20°C. Avoid repeated freeze-thaw cycles.
Protein Name	Prostacyclin receptor
Gene Name	PTGIR
Cellular localization	Cell membrane; Multi-pass membrane protein.
Purification	The antibody was affinity-purified from rabbit antiserum by affinity-chromatography using epitope-specific immunogen.
Clonality	Polyclonal

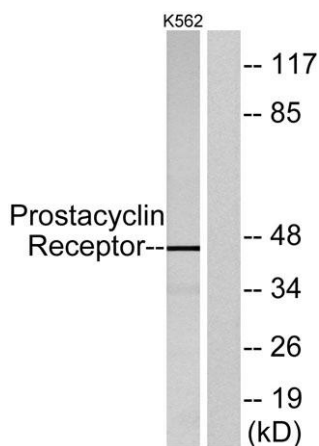
Concentration	1 mg/ml
Observed band	45kD
Human Gene ID	5739
Human Swiss-Prot Number	P43119
Alternative Names	PTGIR; PRIPR; Prostacyclin receptor; Prostaglandin I2 receptor; PGI receptor; PGI2 receptor; Prostanoid IP receptor

Background

The protein encoded by this gene is a member of the G-protein coupled receptor family 1 and has been shown to be a receptor for prostacyclin. Prostacyclin, the major product of cyclooxygenase in macrovascular endothelium, elicits a potent vasodilation and inhibition of platelet aggregation through binding to this receptor. [provided by RefSeq, Jul 2008],



Immunofluorescence analysis of LOVO cells, using Prostacyclin Receptor Antibody. The picture on the right is blocked with the synthesized peptide.

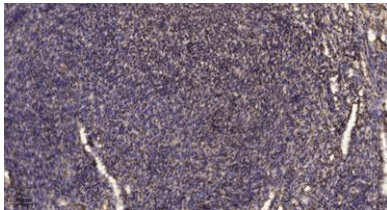


Western blot analysis of lysates from K562 cells, using Prostacyclin Receptor Antibody. The lane on the right is blocked with the synthesized peptide.

(kD)
117-
85-
48-
34-
26-
19-



Prostacyclin Receptor antibody. Western blot analysis of the lysates from HUVEC cells using Prostacyclin Receptor antibody.



Immunohistochemical analysis of paraffin-embedded human uterus. 1, Antibody was diluted at 1:200 (4° overnight). 2, Tris-EDTA, pH 9.0 was used for antigen retrieval. 3, Secondary antibody was diluted at 1:200 (room temperature, 45 min).