

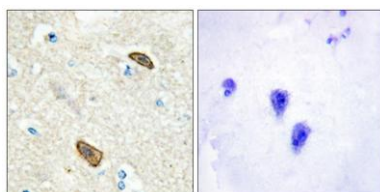
**TEM7 rabbit pAb****Cat#: orb769745 (Manual)**

For research use only. Not intended for diagnostic use.

<b>Product Name</b>	TEM7 rabbit pAb
<b>Host species</b>	Rabbit
<b>Applications</b>	IHC;IF;ELISA
<b>Species Cross-Reactivity</b>	Human;Rat;Mouse;
<b>Recommended dilutions</b>	Immunohistochemistry: 1/100 - 1/300. ELISA: 1/20000. Not yet tested in other applications.
<b>Immunogen</b>	The antiserum was produced against synthesized peptide derived from human PLXDC1. AA range:71-120
<b>Specificity</b>	TEM7 Polyclonal Antibody detects endogenous levels of TEM7 protein.
<b>Formulation</b>	Liquid in PBS containing 50% glycerol, 0.5% BSA and 0.02% sodium azide..
<b>Storage</b>	Store at -20°C. Avoid repeated freeze-thaw cycles.
<b>Protein Name</b>	Plexin domain-containing protein 1
<b>Gene Name</b>	PLXDC1
<b>Cellular localization</b>	[Isoform 1]: Cell membrane; Single-pass type I membrane protein. Cell junction, tight junction. Localized predominantly at the tight junctions of vascular endothelial cells and to a lesser extent at the luminal surface of vascular endothelial cells.; [Isoform 2]: Secreted .; [Isoform 3]: Secreted .; [Isoform 4]: Cytoplasm .
<b>Purification</b>	The antibody was affinity-purified from rabbit antiserum by affinity-chromatography using epitope-specific immunogen.

<b>Clonality</b>	Polyclonal
<b>Concentration</b>	1 mg/ml
<b>Observed band</b>	
<b>Human Gene ID</b>	57125
<b>Human Swiss-Prot Number</b>	Q8IUK5
<b>Alternative Names</b>	PLXDC1; TEM3; TEM7; Plexin domain-containing protein 1; Tumor endothelial marker 3; Tumor endothelial marker 7

**Background** PTM:N-glycosylated.,similarity:Belongs to the plexin family.,subunit:May interact with cortactin.,tissue specificity:Detected in endothelial cells from colorectal cancer, and in endothelial cells from primary cancers of the lung, liver, pancreas, breast and brain. Not detectable in endothelial cells from normal tissue.,



**Immunohistochemistry analysis of paraffin-embedded human brain, using PLXDC1 Antibody. The picture on the right is blocked with the synthesized peptide.**