

## CysLTR2 rabbit pAb

**Cat#: orb769743 (Manual)**

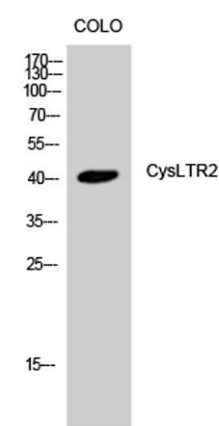
For research use only. Not intended for diagnostic use.

|                                 |                                                                                                                         |
|---------------------------------|-------------------------------------------------------------------------------------------------------------------------|
| <b>Product Name</b>             | CysLTR2 rabbit pAb                                                                                                      |
| <b>Host species</b>             | Rabbit                                                                                                                  |
| <b>Applications</b>             | WB;IF;ELISA                                                                                                             |
| <b>Species Cross-Reactivity</b> | Human;Rat;Mouse;                                                                                                        |
| <b>Recommended dilutions</b>    | Western Blot: 1/500 - 1/2000. Immunofluorescence: 1/200 - 1/1000. ELISA: 1/20000. Not yet tested in other applications. |
| <b>Immunogen</b>                | The antiserum was produced against synthesized peptide derived from human CYSLTR2. AA range:281-330                     |
| <b>Specificity</b>              | CysLTR2 Polyclonal Antibody detects endogenous levels of CysLTR2 protein.                                               |
| <b>Formulation</b>              | Liquid in PBS containing 50% glycerol, 0.5% BSA and 0.02% sodium azide..                                                |
| <b>Storage</b>                  | Store at -20°C. Avoid repeated freeze-thaw cycles.                                                                      |
| <b>Protein Name</b>             | Cysteinyl leukotriene receptor 2                                                                                        |
| <b>Gene Name</b>                | CYSLTR2                                                                                                                 |
| <b>Cellular localization</b>    | Cell membrane; Multi-pass membrane protein.                                                                             |
| <b>Purification</b>             | The antibody was affinity-purified from rabbit antiserum by affinity-chromatography using epitope-specific immunogen.   |
| <b>Clonality</b>                | Polyclonal                                                                                                              |

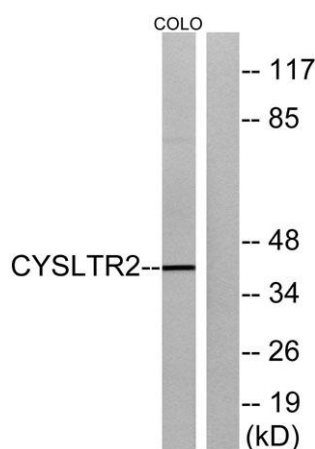
|                                |                                                                                                                                                                    |
|--------------------------------|--------------------------------------------------------------------------------------------------------------------------------------------------------------------|
| <b>Concentration</b>           | 1 mg/ml                                                                                                                                                            |
| <b>Observed band</b>           | 40kD                                                                                                                                                               |
| <b>Human Gene ID</b>           | 57105                                                                                                                                                              |
| <b>Human Swiss-Prot Number</b> | Q9NS75                                                                                                                                                             |
| <b>Alternative Names</b>       | CYSLTR2; CYSLT2; CYSLT2R; PSEC0146; Cysteinyl leukotriene receptor 2; CysLTR2; G-protein coupled receptor GPCR21; hGPCR21; G-protein coupled receptor HG57; HPN321 |

### Background

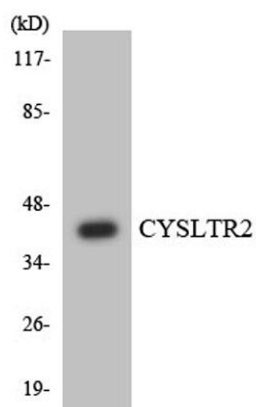
The cysteinyl leukotrienes LTC<sub>4</sub>, LTD<sub>4</sub>, and LTE<sub>4</sub> are important mediators of human bronchial asthma. Pharmacologic studies have determined that cysteinyl leukotrienes activate at least 2 receptors, the protein encoded by this gene and CYSLTR1. This encoded receptor is a member of the superfamily of G protein-coupled receptors. It seems to play a major role in endocrine and cardiovascular systems. [provided by RefSeq, Jul 2008],



**Western Blot analysis of COLO cells using CysLTR2 Polyclonal Antibody**



**Western blot analysis of lysates from COLO cells, using CYSLTR2 Antibody. The lane on the right is blocked with the synthesized peptide.**



Western blot analysis of the lysates from HT-29 cells using CYSLTR2 antibody.