

Shd rabbit pAb

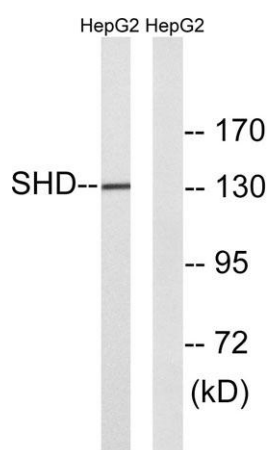
Cat#: orb769739 (Manual)

For research use only. Not intended for diagnostic use.

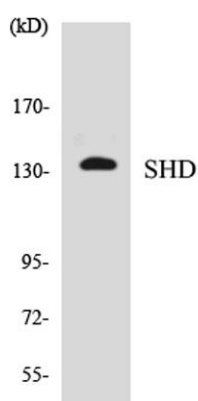
Product Name	Shd rabbit pAb
Host species	Rabbit
Applications	WB;ELISA
Species Cross-Reactivity	Human;Rat;Mouse;
Recommended dilutions	Western Blot: 1/500 - 1/2000. ELISA: 1/40000. Not yet tested in other applications.
Immunogen	The antiserum was produced against synthesized peptide derived from human SHD. AA range:141-190
Specificity	Shd Polyclonal Antibody detects endogenous levels of Shd protein.
Formulation	Liquid in PBS containing 50% glycerol, 0.5% BSA and 0.02% sodium azide..
Storage	Store at -20°C. Avoid repeated freeze-thaw cycles.
Protein Name	SH2 domain-containing adapter protein D
Gene Name	SHD
Cellular localization	
Purification	The antibody was affinity-purified from rabbit antiserum by affinity-chromatography using epitope-specific immunogen.
Clonality	Polyclonal

Concentration	1 mg/ml
Observed band	130kD
Human Gene ID	56961
Human Swiss-Prot Number	Q96IW2
Alternative Names	SHD; SH2 domain-containing adapter protein D

Background function:May function as an adapter protein.,PTM:Tyrosine phosphorylated by ABL.,similarity:Contains 1 SH2 domain.,



Western blot analysis of lysates from HepG2 cells, using SHD Antibody. The lane on the right is blocked with the synthesized peptide.



Western blot analysis of the lysates from HepG2 cells using SHD antibody.