

VHX rabbit pAb**Cat#: orb769738 (Manual)**

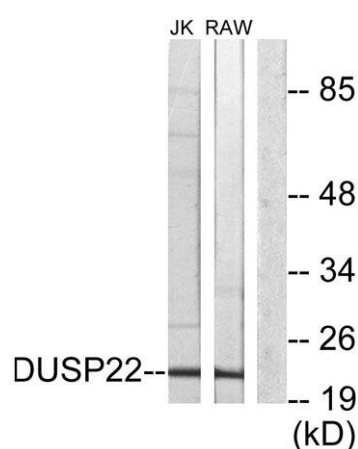
For research use only. Not intended for diagnostic use.

Product Name	VHX rabbit pAb
Host species	Rabbit
Applications	WB;IHC;IF;ELISA
Species Cross-Reactivity	Human;Mouse
Recommended dilutions	Western Blot: 1/500 - 1/2000. ELISA: 1/10000. Not yet tested in other applications.
Immunogen	The antiserum was produced against synthesized peptide derived from human DUSP22. AA range:121-170
Specificity	VHX Polyclonal Antibody detects endogenous levels of VHX protein.
Formulation	Liquid in PBS containing 50% glycerol, 0.5% BSA and 0.02% sodium azide..
Storage	Store at -20°C. Avoid repeated freeze-thaw cycles.
Protein Name	Dual specificity protein phosphatase 22
Gene Name	DUSP22
Cellular localization	Cytoplasm .
Purification	The antibody was affinity-purified from rabbit antiserum by affinity-chromatography using epitope-specific immunogen.
Clonality	Polyclonal

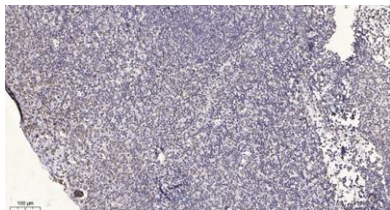
Concentration	1 mg/ml
Observed band	21kD
Human Gene ID	56940
Human Swiss-Prot Number	Q9NRW4
Alternative Names	DUSP22; JSP1; LMWDSP2; MKPX; Dual specificity protein phosphatase 22; JNK-stimulatory phosphatase-1; JSP-1; Low molecular weight dual specificity phosphatase 2; LMW-DSP2; Mitogen-activated protein kinase phosphatase x; MAP kinase phosphatase

Background

catalytic activity: A phosphoprotein + H₂O = a protein + phosphate., catalytic activity: Protein tyrosine phosphate + H₂O = protein tyrosine + phosphate., function: Activates the Jnk signaling pathway. Dephosphorylates and deactivates p38 and stress-activated protein kinase/c-Jun N-terminal kinase (SAPK/JNK)., similarity: Belongs to the protein-tyrosine phosphatase family. Non-receptor class dual specificity subfamily., similarity: Contains 1 tyrosine-protein phosphatase domain., tissue specificity: Ubiquitous. Highest expression seen in heart, placenta, lung, liver, kidney and pancreas.,



Western blot analysis of lysates from RAW264.7 and Jurkat cells, using DUSP22 Antibody. The lane on the right is blocked with the synthesized peptide.



Immunohistochemical analysis of paraffin-embedded human tonsil. 1, Antibody was diluted at 1:200(4° overnight). 2, Tris-EDTA,pH9.0 was used for antigen retrieval. 3,Secondary antibody was diluted at 1:200(room temperature, 30min).