

SphK2 rabbit pAb**Cat#: orb769733 (Manual)**

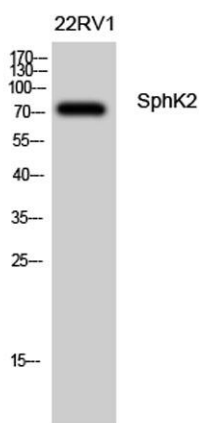
For research use only. Not intended for diagnostic use.

Product Name	SphK2 rabbit pAb
Host species	Rabbit
Applications	WB;IHC;IF;ELISA
Species Cross-Reactivity	Human;Mouse;Rat
Recommended dilutions	Western Blot: 1/500 - 1/2000. Immunohistochemistry: 1/100 - 1/300. ELISA: 1/5000. Not yet tested in other applications.
Immunogen	The antiserum was produced against synthesized peptide derived from human SPHK2. AA range:580-629
Specificity	SphK2 Polyclonal Antibody detects endogenous levels of SphK2 protein.
Formulation	Liquid in PBS containing 50% glycerol, 0.5% BSA and 0.02% sodium azide..
Storage	Store at -20°C. Avoid repeated freeze-thaw cycles.
Protein Name	Sphingosine kinase 2
Gene Name	SPHK2
Cellular localization	Cytoplasm . Nucleus . Endoplasmic reticulum . Mitochondrion inner membrane . In nucleus, located in nucleosomes where it associates with core histone proteins such as histone 3 (PubMed:19729656). In brains of patients with Alzheimer's disease, may be preferentially localized in the nucleus. Cytosolic expression decrease correlates with the density of amyloid deposits (PubMed:29615132). In apoptotic cells, colocalizes with CASP1 in cell membrane where is cleaved and released from cells in an active form (PubMed:20197547). .; [Isoform 2]: Lysosome membrane .

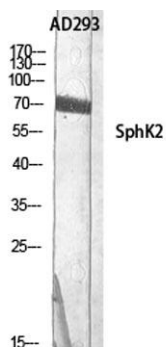
Purification	The antibody was affinity-purified from rabbit antiserum by affinity-chromatography using epitope-specific immunogen.
Clonality	Polyclonal
Concentration	1 mg/ml
Observed band	70kD
Human Gene ID	56848
Human Swiss-Prot Number	Q9NRA0
Alternative Names	SPHK2; Sphingosine kinase 2; SK 2; SPK 2

Background

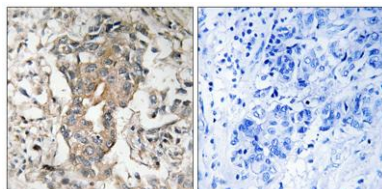
This gene encodes one of two sphingosine kinase isozymes that catalyze the phosphorylation of sphingosine into sphingosine 1-phosphate. Sphingosine 1-phosphate mediates many cellular processes including migration, proliferation and apoptosis, and also plays a role in several types of cancer by promoting angiogenesis and tumorigenesis. The encoded protein may play a role in breast cancer proliferation and chemoresistance. Alternatively spliced transcript variants encoding multiple isoforms have been observed for this gene. [provided by RefSeq, Aug 2011].



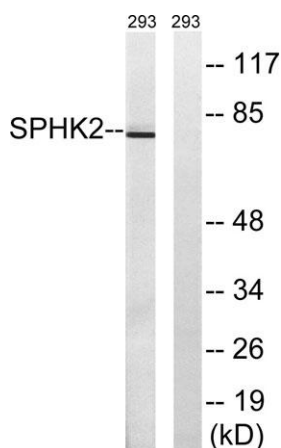
Western Blot analysis of 22RV1 cells using SphK2 Polyclonal Antibody diluted at 1:500



Western Blot analysis of AD293 using SphK2 Polyclonal Antibody diluted at 1:500



Immunohistochemistry analysis of paraffin-embedded human breast carcinoma tissue, using SPHK2 Antibody. The picture on the right is blocked with the synthesized peptide.



Western blot analysis of lysates from 293 cells, using SPHK2 Antibody. The lane on the right is blocked with the synthesized peptide.