

GPR91 rabbit pAb

Cat#: orb769728 (Manual)

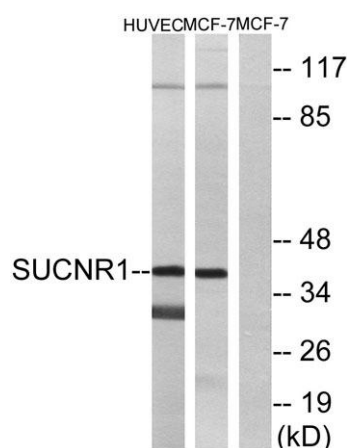
For research use only. Not intended for diagnostic use.

Product Name	GPR91 rabbit pAb
Host species	Rabbit
Applications	WB;IF;ELISA
Species Cross-Reactivity	Human;Mouse;Rat;Pig
Recommended dilutions	Western Blot: 1/500 - 1/2000. Immunofluorescence: 1/200 - 1/1000. ELISA: 1/10000. Not yet tested in other applications.
Immunogen	The antiserum was produced against synthesized peptide derived from human SUCNR1. AA range:100-149
Specificity	GPR91 Polyclonal Antibody detects endogenous levels of GPR91 protein.
Formulation	Liquid in PBS containing 50% glycerol, 0.5% BSA and 0.02% sodium azide..
Storage	Store at -20°C. Avoid repeated freeze-thaw cycles.
Protein Name	Succinate receptor 1
Gene Name	SUCNR1
Cellular localization	Cell membrane ; Multi-pass membrane protein .
Purification	The antibody was affinity-purified from rabbit antiserum by affinity-chromatography using epitope-specific immunogen.
Clonality	Polyclonal

Concentration	1 mg/ml
Observed band	38kD
Human Gene ID	56670
Human Swiss-Prot Number	Q9BXA5
Alternative Names	SUCNR1; GPR91; Succinate receptor 1; G-protein coupled receptor 91; P2Y purinoceptor 1-like

Background

This gene encodes a G-protein-coupled receptor for succinate, an intermediate molecule of the citric acid cycle. It is involved in the promotion of hematopoietic progenitor cell development, and it has a potential role in renovascular hypertension which has known correlations to renal failure, diabetes and atherosclerosis. [provided by RefSeq, Oct 2009],



Western blot analysis of lysates from HUVEC and MCF-7 cells, using SUCNR1 Antibody. The lane on the right is blocked with the synthesized peptide.