

THIK-2 rabbit pAb**Cat#: orb769727 (Manual)**

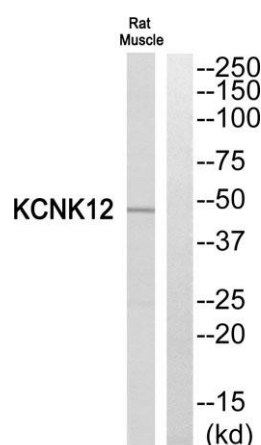
For research use only. Not intended for diagnostic use.

Product Name	THIK-2 rabbit pAb
Host species	Rabbit
Applications	WB; ELISA;IHC
Species Cross-Reactivity	Human;Mouse;Rat
Recommended dilutions	WB 1:500-2000;IHC-p 1:50-300; ELISA 2000-20000
Immunogen	The antiserum was produced against synthesized peptide derived from human KCNK12. AA range:336-385
Specificity	THIK-2 Polyclonal Antibody detects endogenous levels of THIK-2 protein.
Formulation	Liquid in PBS containing 50% glycerol, 0.5% BSA and 0.02% sodium azide..
Storage	Store at -20°C. Avoid repeated freeze-thaw cycles.
Protein Name	Potassium channel subfamily K member 12
Gene Name	KCNK12
Cellular localization	Membrane ; Multi-pass membrane protein .
Purification	The antibody was affinity-purified from rabbit antiserum by affinity-chromatography using epitope-specific immunogen.
Clonality	Polyclonal

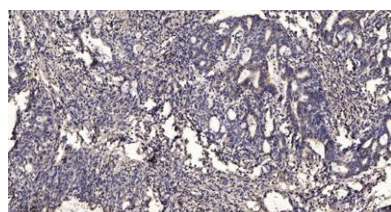
Concentration	1 mg/ml
Observed band	47kD
Human Gene ID	56660
Human Swiss-Prot Number	Q9HB15
Alternative Names	KCNK12; Potassium channel subfamily K member 12; Tandem pore domain halothane-inhibited potassium channel 2; THIK-2

Background

potassium two pore domain channel subfamily K member 12(KCNK12)
Homo sapiens This gene encodes one of the members of the superfamily of potassium channel proteins containing two pore-forming P domains. The product of this gene has not been shown to be a functional channel, however, it may require other non-pore-forming proteins for activity. [provided by RefSeq, Jul 2008],



Western blot analysis of KCNK12 Antibody. The lane on the right is blocked with the KCNK12 peptide.



Immunohistochemical analysis of paraffin-embedded human Gastric adenocarcinoma. 1, Antibody was diluted at 1:200(4° overnight). 2, Tris-EDTA,pH9.0 was used for antigen retrieval. 3,Secondary antibody was diluted at 1:200(room temperature, 45min).