

**MEK-6 rabbit pAb****Cat#: orb769706 (Manual)**

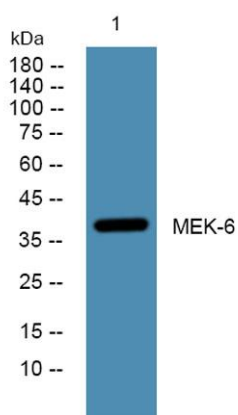
For research use only. Not intended for diagnostic use.

<b>Product Name</b>	MEK-6 rabbit pAb
<b>Host species</b>	Rabbit
<b>Applications</b>	WB;IHC;IF;ELISA
<b>Species Cross-Reactivity</b>	Human;Mouse;Rat
<b>Recommended dilutions</b>	Western Blot: 1/500 - 1/2000. Immunohistochemistry: 1/100 - 1/300. ELISA: 1/5000. Not yet tested in other applications.
<b>Immunogen</b>	Synthesized peptide derived from MEK-6 . at AA range: 150-230
<b>Specificity</b>	MEK-6 Polyclonal Antibody detects endogenous levels of MEK-6 protein.
<b>Formulation</b>	Liquid in PBS containing 50% glycerol, 0.5% BSA and 0.02% sodium azide..
<b>Storage</b>	Store at -20°C. Avoid repeated freeze-thaw cycles.
<b>Protein Name</b>	Dual specificity mitogen-activated protein kinase kinase 6
<b>Gene Name</b>	MAP2K6
<b>Cellular localization</b>	Nucleus . Cytoplasm . Cytoplasm, cytoskeleton . Binds to microtubules.
<b>Purification</b>	The antibody was affinity-purified from rabbit antiserum by affinity-chromatography using epitope-specific immunogen.
<b>Clonality</b>	Polyclonal

<b>Concentration</b>	1 mg/ml
<b>Observed band</b>	39kD
<b>Human Gene ID</b>	5608
<b>Human Swiss-Prot Number</b>	P52564
<b>Alternative Names</b>	MAP2K6; MEK6; MKK6; PRKMK6; SKK3; Dual specificity mitogen-activated protein kinase kinase 6; MAP kinase kinase 6; MAPKK 6; MAPK/ERK kinase 6; MEK 6; Stress-activated protein kinase kinase 3; SAPK kinase 3; SAPKK-3; SAPKK3

### Background

This gene encodes a member of the dual specificity protein kinase family, which functions as a mitogen-activated protein (MAP) kinase kinase. MAP kinases, also known as extracellular signal-regulated kinases (ERKs), act as an integration point for multiple biochemical signals. This protein phosphorylates and activates p38 MAP kinase in response to inflammatory cytokines or environmental stress. As an essential component of p38 MAP kinase mediated signal transduction pathway, this gene is involved in many cellular processes such as stress induced cell cycle arrest, transcription activation and apoptosis. [provided by RefSeq, Jul 2008],



**Western blot analysis of lysates from KB cells, primary antibody was diluted at 1:1000, 4° over night**



**Immunohistochemical analysis of paraffin-embedded human small intestinal carcinoma tissue. 1,primary Antibody was diluted at 1:200(4° overnight). 2, Sodium citrate pH 6.0 was used for antigen retrieval(>98°C,20min). 3,Secondary antibody was diluted at 1:2**