

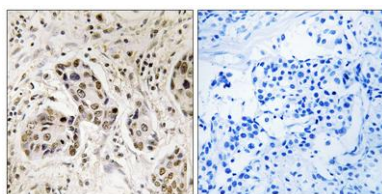
RCC2 rabbit pAb**Cat#: orb769686 (Manual)**

For research use only. Not intended for diagnostic use.

Product Name	RCC2 rabbit pAb
Host species	Rabbit
Applications	WB;IHC;IF;ELISA
Species Cross-Reactivity	Human;Mouse
Recommended dilutions	Western Blot: 1/500 - 1/2000. Immunohistochemistry: 1/100 - 1/300. ELISA: 1/5000. Not yet tested in other applications.
Immunogen	The antiserum was produced against synthesized peptide derived from human RCC2. AA range:473-522
Specificity	RCC2 Polyclonal Antibody detects endogenous levels of RCC2 protein.
Formulation	Liquid in PBS containing 50% glycerol, 0.5% BSA and 0.02% sodium azide..
Storage	Store at -20°C. Avoid repeated freeze-thaw cycles.
Protein Name	Protein RCC2
Gene Name	RCC2
Cellular localization	Nucleus, nucleolus . Nucleus . Cytoplasm, cytoskeleton . Chromosome, centromere . Cytoplasm, cytoskeleton, spindle . Chromosome . Midbody . Cell membrane ; Peripheral membrane protein ; Cytoplasmic side . Appears in the nucleus at G2, then concentrates at the inner centromere region of chromosomes during prophase. Redistributes to the midzone of the mitotic spindle during anaphase. Here, the protein covers the entire equatorial diameter from cortex to cortex (PubMed:12919680, PubMed:1939370, PubMed:7559776, PubMed:9914378). Colocalizes with cytoplasmic microtubules in interphase cells (PubMed:23388455). Colocalizes with RAC1 at the cell membrane (PubMed:25074804). .

Purification	The antibody was affinity-purified from rabbit antiserum by affinity-chromatography using epitope-specific immunogen.
Clonality	Polyclonal
Concentration	1 mg/ml
Observed band	56kD
Human Gene ID	55920
Human Swiss-Prot Number	Q9P258
Alternative Names	RCC2; KIAA1470; TD60; Protein RCC2; RCC1-like protein TD-60; Telophase disk protein of 60 kDa

Background	<p>function:Required for completion of mitosis and cytokinesis. May function as a guanine nucleotide exchange factor for the small GTPase RAC1.,PTM:Phosphorylated upon DNA damage, probably by ATM or ATR.,similarity:Contains 7 RCC1 repeats.,subcellular location:Appears in the nucleus at G2, then concentrates at the inner centromere region of chromosomes during prophase. Redistributes to the midzone of the mitotic spindle during anaphase. Here, the protein covers the entire equatorial diameter from cortex to cortex.,subunit:Binds preferentially to the nucleotide-free form of RAC1. Interacts with microtubules.,</p>
-------------------	---



Immunohistochemistry analysis of paraffin-embedded human breast carcinoma tissue, using RCC2 Antibody. The picture on the right is blocked with the synthesized peptide.