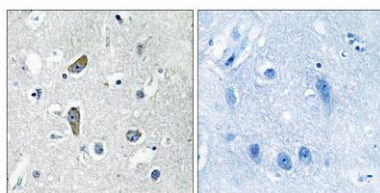


CDK5 Activator-binding C48 rabbit pAb**Cat#: orb769632 (Manual)**

For research use only. Not intended for diagnostic use.

| | |
|---------------------------------|--|
| Product Name | CDK5 Activator-binding C48 rabbit pAb |
| Host species | Rabbit |
| Applications | IHC;IF;ELISA |
| Species Cross-Reactivity | Human;Rat;Mouse; |
| Recommended dilutions | Immunohistochemistry: 1/100 - 1/300. ELISA: 1/20000. Not yet tested in other applications. |
| Immunogen | The antiserum was produced against synthesized peptide derived from human CDK5RAP2. AA range:251-300 |
| Specificity | CDK5 Activator-binding C48 Polyclonal Antibody detects endogenous levels of CDK5 Activator-binding C48 protein. |
| Formulation | Liquid in PBS containing 50% glycerol, 0.5% BSA and 0.02% sodium azide.. |
| Storage | Store at -20°C. Avoid repeated freeze-thaw cycles. |
| Protein Name | CDK5 regulatory subunit-associated protein 2 |
| Gene Name | CDK5RAP2 |
| Cellular localization | Cytoplasm, cytoskeleton, microtubule organizing center, centrosome . Golgi apparatus . Cytoplasm . Cytoplasm, cytoskeleton . Found in the pericentriolar region adhering to the surface of the centrosome and in the region of the centrosomal appendages. Localizes to microtubule plus ends in the presence of EB1/MAPRE1. Localization to centrosomes versus Golgi apparatus may be cell type-dependent. For instance, in SK-BR-3 and HEK293F cells, localizes to centrosomes but not to the Golgi apparatus (PubMed:29162697). . |

| | |
|--------------------------------|--|
| Purification | The antibody was affinity-purified from rabbit antiserum by affinity-chromatography using epitope-specific immunogen. |
| Clonality | Polyclonal |
| Concentration | 1 mg/ml |
| Observed band | |
| Human Gene ID | 55755 |
| Human Swiss-Prot Number | Q96SN8 |
| Alternative Names | CDK5RAP2; CEP215; KIAA1633; CDK5 regulatory subunit-associated protein 2; CDK5 activator-binding protein C48; Centrosome-associated protein 215 |
| Background | This gene encodes a regulator of CDK5 (cyclin-dependent kinase 5) activity. The protein encoded by this gene is localized to the centrosome and Golgi complex, interacts with CDK5R1 and pericentrin (PCNT), plays a role in centriole engagement and microtubule nucleation, and has been linked to primary microcephaly and Alzheimer's disease. Alternative splicing results in multiple transcript variants. [provided by RefSeq, Jan 2013], |



Immunohistochemistry analysis of paraffin-embedded human brain, using CDK5RAP2 Antibody. The picture on the right is blocked with the synthesized peptide.