

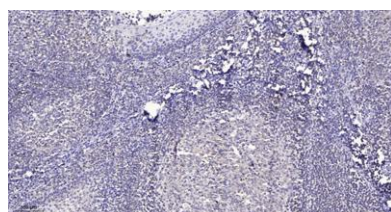
**EDEM2 rabbit pAb****Cat#: orb769630 (Manual)**

For research use only. Not intended for diagnostic use.

<b>Product Name</b>	EDEM2 rabbit pAb
<b>Host species</b>	Rabbit
<b>Applications</b>	IHC;IF;ELISA
<b>Species Cross-Reactivity</b>	Human;Rat;Mouse;
<b>Recommended dilutions</b>	Immunohistochemistry: 1/100 - 1/300. ELISA: 1/10000. Not yet tested in other applications.
<b>Immunogen</b>	Synthesized peptide derived from the C-terminal region of human EDEM2.
<b>Specificity</b>	EDEM2 Polyclonal Antibody detects endogenous levels of EDEM2 protein.
<b>Formulation</b>	Liquid in PBS containing 50% glycerol, 0.5% BSA and 0.02% sodium azide..
<b>Storage</b>	Store at -20°C. Avoid repeated freeze-thaw cycles.
<b>Protein Name</b>	ER degradation-enhancing alpha-mannosidase-like 2
<b>Gene Name</b>	EDEM2
<b>Cellular localization</b>	Endoplasmic reticulum lumen .
<b>Purification</b>	The antibody was affinity-purified from rabbit antiserum by affinity-chromatography using epitope-specific immunogen.
<b>Clonality</b>	Polyclonal

<b>Concentration</b>	1 mg/ml
<b>Observed band</b>	
<b>Human Gene ID</b>	55741
<b>Human Swiss-Prot Number</b>	Q9BV94
<b>Alternative Names</b>	EDEM2; C20orf31; C20orf49; ER degradation-enhancing alpha-mannosidase-like 2

**Background** In the endoplasmic reticulum (ER), misfolded proteins are retrotranslocated to the cytosol and degraded by the proteasome in a process known as ER-associated degradation (ERAD). EDEM2 belongs to a family of proteins involved in ERAD of glycoproteins (Mast et al., 2005 [PubMed 15537790]).[supplied by OMIM, Mar 2008],



**Immunohistochemical analysis of paraffin-embedded human tonsil. 1, Antibody was diluted at 1:200(4° overnight). 2, Tris-EDTA,pH9.0 was used for antigen retrieval. 3,Secondary antibody was diluted at 1:200(room temperature, 30min).**