

Mena rabbit pAb**Cat#: orb769629 (Manual)**

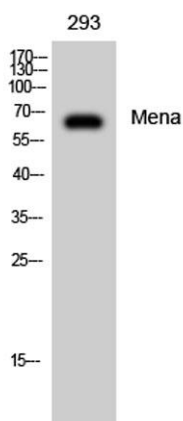
For research use only. Not intended for diagnostic use.

Product Name	Mena rabbit pAb
Host species	Rabbit
Applications	WB;IHC;IF;ELISA
Species Cross-Reactivity	Human;Mouse;Rat
Recommended dilutions	Western Blot: 1/500 - 1/2000. Immunohistochemistry: 1/100 - 1/300. ELISA: 1/10000. Not yet tested in other applications.
Immunogen	The antiserum was produced against synthesized peptide derived from human ENAH. AA range:472-521
Specificity	Mena Polyclonal Antibody detects endogenous levels of Mena protein.
Formulation	Liquid in PBS containing 50% glycerol, 0.5% BSA and 0.02% sodium azide..
Storage	Store at -20°C. Avoid repeated freeze-thaw cycles.
Protein Name	Protein enabled homolog
Gene Name	ENAH
Cellular localization	Cytoplasm. Cytoplasm, cytoskeleton . Cell projection, lamellipodium . Cell projection, filopodium . Cell junction, synapse . Cell junction, focal adhesion. Targeted to the leading edge of lamellipodia and filopodia by MRL family members. Colocalizes at filopodial tips with a number of other proteins including vinculin and zyxlin. Colocalizes with N-WASP at the leading edge. Colocalizes with GPHN and PFN at synapses (By similarity). .

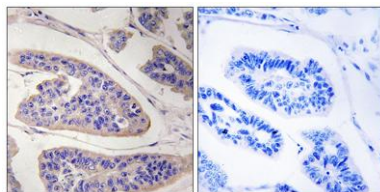
Purification	The antibody was affinity-purified from rabbit antiserum by affinity-chromatography using epitope-specific immunogen.
Clonality	Polyclonal
Concentration	1 mg/ml
Observed band	67kD
Human Gene ID	55740
Human Swiss-Prot Number	Q8N8S7
Alternative Names	ENAH; MENA; Protein enabled homolog

Background

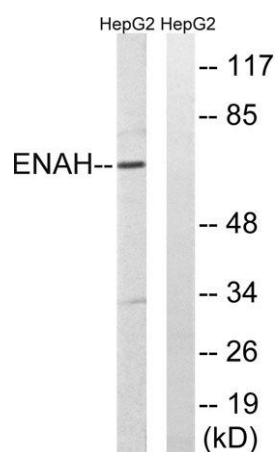
This gene encodes a member of the enabled/ vasodilator-stimulated phosphoprotein. Members of this gene family are involved in actin-based motility. This protein is involved in regulating the assembly of actin filaments and modulates cell adhesion and motility. Alternate splice variants of this gene have been correlated with tumor invasiveness in certain tissues and these variants may serve as prognostic markers. A pseudogene of this gene is found on chromosome 3. [provided by RefSeq, Sep 2016],



Western Blot analysis of 293 cells using Mena Polyclonal Antibody diluted at 1:2000



Immunohistochemistry analysis of paraffin-embedded human breast carcinoma tissue, using ENAH Antibody. The picture on the right is blocked with the synthesized peptide.



Western blot analysis of lysates from HepG2 cells, using ENAH Antibody. The lane on the right is blocked with the synthesized peptide.