

ASF1B rabbit pAb**Cat#: orb769627 (Manual)**

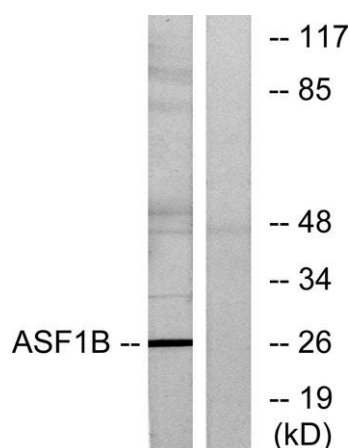
For research use only. Not intended for diagnostic use.

Product Name	ASF1B rabbit pAb
Host species	Rabbit
Applications	WB;IHC;IF;ELISA
Species Cross-Reactivity	Human;Mouse;Rat
Recommended dilutions	Western Blot: 1/500 - 1/2000. Immunohistochemistry: 1/100 - 1/300. ELISA: 1/5000. Not yet tested in other applications.
Immunogen	The antiserum was produced against synthesized peptide derived from human ASF1B. AA range:101-150
Specificity	ASF1B Polyclonal Antibody detects endogenous levels of ASF1B protein.
Formulation	Liquid in PBS containing 50% glycerol, 0.5% BSA and 0.02% sodium azide..
Storage	Store at -20°C. Avoid repeated freeze-thaw cycles.
Protein Name	Histone chaperone ASF1B
Gene Name	ASF1B
Cellular localization	Nucleus .
Purification	The antibody was affinity-purified from rabbit antiserum by affinity-chromatography using epitope-specific immunogen.
Clonality	Polyclonal

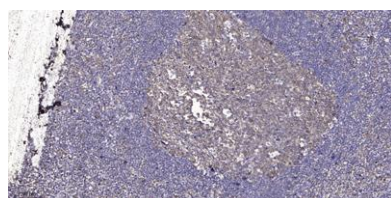
Concentration	1 mg/ml
Observed band	26kD
Human Gene ID	55723
Human Swiss-Prot Number	Q9NVP2
Alternative Names	ASF1B; Histone chaperone ASF1B; Anti-silencing function protein 1 homolog B; hAsf1; hAsf1b; CCG1-interacting factor A-II; CIA-II; hCIA-II

Background

This gene encodes a member of the H3/H4 family of histone chaperone proteins and is similar to the anti-silencing function-1 gene in yeast. The encoded protein is the substrate of the tousel-like kinase family of cell cycle-regulated kinases, and may play a key role in modulating the nucleosome structure of chromatin by ensuring a constant supply of histones at sites of nucleosome assembly. [provided by RefSeq, Jul 2008],



Western blot analysis of lysates from K562 cells, using ASF1B Antibody. The lane on the right is blocked with the synthesized peptide.



Immunohistochemical analysis of paraffin-embedded human tonsil. 1, Antibody was diluted at 1:200(4° overnight). 2, Tris-EDTA,pH9.0 was used for antigen retrieval. 3,Secondary antibody was diluted at 1:200(room temperature, 45min).