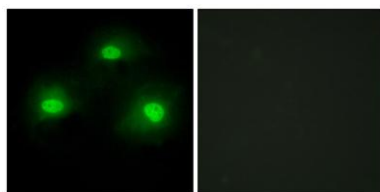


Pki α rabbit pAb**Cat#: orb769620 (Manual)**

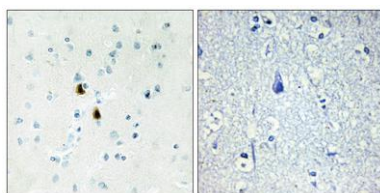
For research use only. Not intended for diagnostic use.

Product Name	Pki α rabbit pAb
Host species	Rabbit
Applications	IHC;IF;ELISA
Species Cross-Reactivity	Human;Mouse;Rat
Recommended dilutions	Immunohistochemistry: 1/100 - 1/300. Immunofluorescence: 1/200 - 1/1000. ELISA: 1/20000. Not yet tested in other applications.
Immunogen	The antiserum was produced against synthesized peptide derived from human IPKA. AA range:10-59
Specificity	Pki α Polyclonal Antibody detects endogenous levels of Pki α protein.
Formulation	Liquid in PBS containing 50% glycerol, 0.5% BSA and 0.02% sodium azide..
Storage	Store at -20°C. Avoid repeated freeze-thaw cycles.
Protein Name	cAMP-dependent protein kinase inhibitor alpha
Gene Name	PKIA
Cellular localization	nucleus,cytoplasm,
Purification	The antibody was affinity-purified from rabbit antiserum by affinity-chromatography using epitope-specific immunogen.
Clonality	Polyclonal

Concentration	1 mg/ml
Observed band	
Human Gene ID	5569
Human Swiss-Prot Number	P61925
Alternative Names	PKIA; PRKACN1; cAMP-dependent protein kinase inhibitor alpha; PKI-alpha; cAMP-dependent protein kinase inhibitor; muscle/brain isoform
Background	The protein encoded by this gene is a member of the cAMP-dependent protein kinase (PKA) inhibitor family. This protein was demonstrated to interact with and inhibit the activities of both C alpha and C beta catalytic subunits of the PKA. Alternatively spliced transcript variants encoding the same protein have been reported. [provided by RefSeq, Jul 2008],



Immunofluorescence analysis of HeLa cells, using IPKA Antibody. The picture on the right is blocked with the synthesized peptide.



Immunohistochemistry analysis of paraffin-embedded human brain tissue, using IPKA Antibody. The picture on the right is blocked with the synthesized peptide.