

**Cdc37L1 rabbit pAb****Cat#: orb769617 (Manual)**

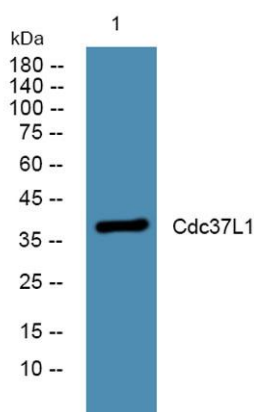
For research use only. Not intended for diagnostic use.

<b>Product Name</b>	Cdc37L1 rabbit pAb
<b>Host species</b>	Rabbit
<b>Applications</b>	WB;ELISA
<b>Species Cross-Reactivity</b>	Human;Rat
<b>Recommended dilutions</b>	Western Blot: 1/500 - 1/2000. ELISA: 1/40000. Not yet tested in other applications.
<b>Immunogen</b>	Synthesized peptide derived from Cdc37L1 . at AA range: 80-160
<b>Specificity</b>	Cdc37L1 Polyclonal Antibody detects endogenous levels of Cdc37L1 protein.
<b>Formulation</b>	Liquid in PBS containing 50% glycerol, 0.5% BSA and 0.02% sodium azide..
<b>Storage</b>	Store at -20°C. Avoid repeated freeze-thaw cycles.
<b>Protein Name</b>	Hsp90 co-chaperone Cdc37-like 1
<b>Gene Name</b>	CDC37L1
<b>Cellular localization</b>	Cytoplasm .
<b>Purification</b>	The antibody was affinity-purified from rabbit antiserum by affinity-chromatography using epitope-specific immunogen.
<b>Clonality</b>	Polyclonal

<b>Concentration</b>	1 mg/ml
<b>Observed band</b>	38kD
<b>Human Gene ID</b>	55664
<b>Human Swiss-Prot Number</b>	Q7L3B6
<b>Alternative Names</b>	CDC37L1; CDC37B; HARC; Hsp90 co-chaperone Cdc37-like 1; Hsp90-associating relative of Cdc37

#### Background

CDC37L1 is a cytoplasmic phosphoprotein that exists in complex with HSP90 (HSPCA; MIM 140571) as well as several other proteins involved in HSP90-mediated protein folding (Scholz et al., 2001 [PubMed 11413142]).[supplied by OMIM, Mar 2008],



Western blot analysis of lysates from KB cells, primary antibody was diluted at 1:1000, 4° over night