

GPR48 rabbit pAb

Cat#: orb769599 (Manual)

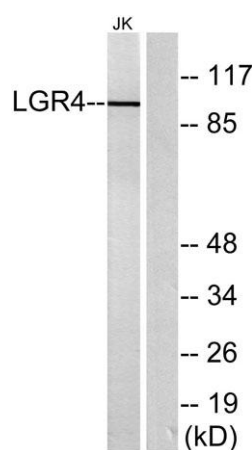
For research use only. Not intended for diagnostic use.

Product Name	GPR48 rabbit pAb
Host species	Rabbit
Applications	WB;IF;ELISA
Species Cross-Reactivity	Human;Rat;Mouse;
Recommended dilutions	Western Blot: 1/500 - 1/2000. Immunofluorescence: 1/200 - 1/1000. ELISA: 1/5000. Not yet tested in other applications.
Immunogen	The antiserum was produced against synthesized peptide derived from human LGR4. AA range:461-510
Specificity	GPR48 Polyclonal Antibody detects endogenous levels of GPR48 protein.
Formulation	Liquid in PBS containing 50% glycerol, 0.5% BSA and 0.02% sodium azide..
Storage	Store at -20°C. Avoid repeated freeze-thaw cycles.
Protein Name	Leucine-rich repeat-containing G-protein coupled receptor 4
Gene Name	LGR4
Cellular localization	Cell membrane ; Multi-pass membrane protein .
Purification	The antibody was affinity-purified from rabbit antiserum by affinity-chromatography using epitope-specific immunogen.
Clonality	Polyclonal

Concentration	1 mg/ml
Observed band	100kD
Human Gene ID	55366
Human Swiss-Prot Number	Q9BXB1
Alternative Names	LGR4; GPR48; Leucine-rich repeat-containing G-protein coupled receptor 4; G-protein coupled receptor 48

Background

The protein encoded by this gene is a G-protein coupled receptor that binds R-spondins and activates the Wnt signaling pathway. This Wnt signaling pathway activation is necessary for proper development of many organs of the body. [provided by RefSeq, Oct 2016],



Western blot analysis of lysates from Jurkat cells, using LGR4 Antibody. The lane on the right is blocked with the synthesized peptide.