

**PLC-XD1 rabbit pAb****Cat#: orb769598 (Manual)**

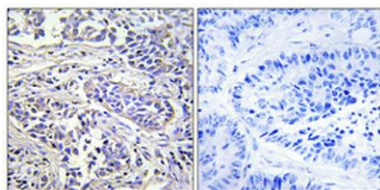
For research use only. Not intended for diagnostic use.

<b>Product Name</b>	PLC-XD1 rabbit pAb
<b>Host species</b>	Rabbit
<b>Applications</b>	IHC;IF;ELISA
<b>Species Cross-Reactivity</b>	Human;Rat;Mouse;
<b>Recommended dilutions</b>	Immunohistochemistry: 1/100 - 1/300. ELISA: 1/40000. Not yet tested in other applications.
<b>Immunogen</b>	The antiserum was produced against synthesized peptide derived from human PLCXD1. AA range:187-236
<b>Specificity</b>	PLC-XD1 Polyclonal Antibody detects endogenous levels of PLC-XD1 protein.
<b>Formulation</b>	Liquid in PBS containing 50% glycerol, 0.5% BSA and 0.02% sodium azide..
<b>Storage</b>	Store at -20°C. Avoid repeated freeze-thaw cycles.
<b>Protein Name</b>	PI-PLC X domain-containing protein 1
<b>Gene Name</b>	PLCXD1
<b>Cellular localization</b>	Cytoplasm .
<b>Purification</b>	The antibody was affinity-purified from rabbit antiserum by affinity-chromatography using epitope-specific immunogen.
<b>Clonality</b>	Polyclonal

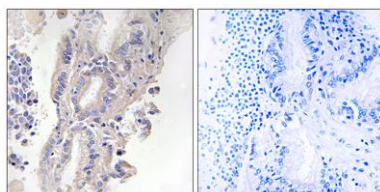
<b>Concentration</b>	1 mg/ml
<b>Observed band</b>	
<b>Human Gene ID</b>	55344
<b>Human Swiss-Prot Number</b>	Q9NUJ7
<b>Alternative Names</b>	PLCXD1; PI-PLC X domain-containing protein 1

#### Background

This gene is the most terminal protein-coding gene in the pseudoautosomal (PAR) region on chromosomes X and Y. Alternate splicing results in multiple transcript variants. [provided by RefSeq, Mar 2010],



**Immunohistochemical analysis of paraffin-embedded Human lung cancer.** Antibody was diluted at 1:100(4° overnight). High-pressure and temperature Tris-EDTA,pH8.0 was used for antigen retrieval. Negative contrl (right) obtained from antibody was pre-absorbe



**Immunohistochemistry analysis of paraffin-embedded human lung carcinoma, using PLCXD1 Antibody.** The picture on the right is blocked with the synthesized peptide.