

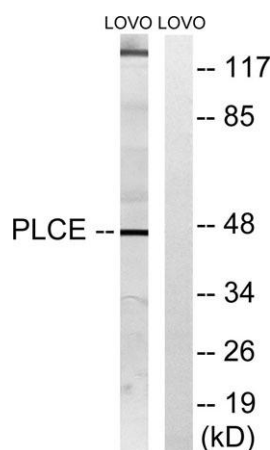
**LPAAT- $\epsilon$  rabbit pAb****Cat#: orb769597 (Manual)**

For research use only. Not intended for diagnostic use.

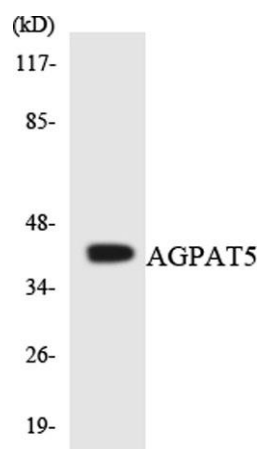
<b>Product Name</b>	LPAAT- $\epsilon$ rabbit pAb
<b>Host species</b>	Rabbit
<b>Applications</b>	WB;IHC
<b>Species Cross-Reactivity</b>	Human;Rat;Mouse;
<b>Recommended dilutions</b>	WB 1:500-2000;IHC-p 1:50-300
<b>Immunogen</b>	The antiserum was produced against synthesized peptide derived from human AGPAT5. AA range:241-290
<b>Specificity</b>	LPAAT- $\epsilon$ Polyclonal Antibody detects endogenous levels of LPAAT- $\epsilon$ protein.
<b>Formulation</b>	Liquid in PBS containing 50% glycerol, 0.5% BSA and 0.02% sodium azide..
<b>Storage</b>	Store at -20°C. Avoid repeated freeze-thaw cycles.
<b>Protein Name</b>	1-acyl-sn-glycerol-3-phosphate acyltransferase epsilon
<b>Gene Name</b>	AGPAT5
<b>Cellular localization</b>	Endoplasmic reticulum membrane ; Multi-pass membrane protein . Nucleus envelope . Mitochondrion .
<b>Purification</b>	The antibody was affinity-purified from rabbit antiserum by affinity-chromatography using      epitope-specific immunogen.
<b>Clonality</b>	Polyclonal

<b>Concentration</b>	1 mg/ml
<b>Observed band</b>	45kD
<b>Human Gene ID</b>	55326
<b>Human Swiss-Prot Number</b>	Q9NUQ2
<b>Alternative Names</b>	AGPAT5; 1-acyl-sn-glycerol-3-phosphate acyltransferase epsilon; 1-acylglycerol-3-phosphate O-acyltransferase 5; 1-AGP acyltransferase 5; 1-AGPAT 5; Lysophosphatidic acid acyltransferase epsilon; LPAAT-epsilon

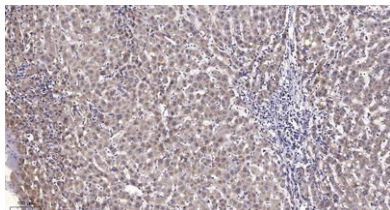
**Background** This gene encodes a member of the 1-acylglycerol-3-phosphate O-acyltransferase family. This integral membrane protein converts lysophosphatidic acid to phosphatidic acid, the second step in de novo phospholipid biosynthesis. A pseudogene of this gene is present on the Y chromosome. [provided by RefSeq, Aug 2014],



Western blot analysis of lysates from LOVO cells, using AGPAT5 Antibody. The lane on the right is blocked with the synthesized peptide.



Western blot analysis of the lysates from HeLa cells using AGPAT5 antibody.



**Immunohistochemical analysis of paraffin-embedded human liver cancer. 1, Antibody was diluted at 1:200(4° overnight). 2, Tris-EDTA,pH9.0 was used for antigen retrieval. 3,Secondary antibody was diluted at 1:200(room temperature, 45min).**