

**PP2A-B56- $\delta$  rabbit pAb****Cat#: orb769594 (Manual)**

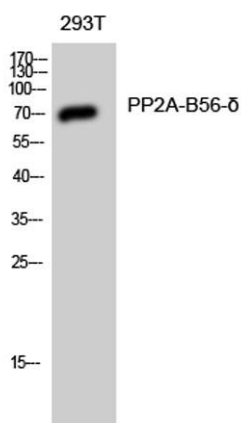
For research use only. Not intended for diagnostic use.

<b>Product Name</b>	PP2A-B56- $\delta$ rabbit pAb
<b>Host species</b>	Rabbit
<b>Applications</b>	WB;IHC;IF;ELISA
<b>Species Cross-Reactivity</b>	Human;Mouse;Rat
<b>Recommended dilutions</b>	Western Blot: 1/500 - 1/2000. Immunohistochemistry: 1/100 - 1/300. ELISA: 1/10000. Not yet tested in other applications.
<b>Immunogen</b>	The antiserum was produced against synthesized peptide derived from human PPP2R5D. AA range:544-593
<b>Specificity</b>	PP2A-B56- $\delta$ Polyclonal Antibody detects endogenous levels of PP2A-B56- $\delta$ protein.
<b>Formulation</b>	Liquid in PBS containing 50% glycerol, 0.5% BSA and 0.02% sodium azide..
<b>Storage</b>	Store at -20°C. Avoid repeated freeze-thaw cycles.
<b>Protein Name</b>	Serine/threonine-protein phosphatase 2A 56 kDa regulatory subunit delta isoform
<b>Gene Name</b>	PPP2R5D
<b>Cellular localization</b>	Cytoplasm. Nucleus. Nuclear in interphase, nuclear during mitosis.
<b>Purification</b>	The antibody was affinity-purified from rabbit antiserum by affinity-chromatography using epitope-specific immunogen.
<b>Clonality</b>	Polyclonal

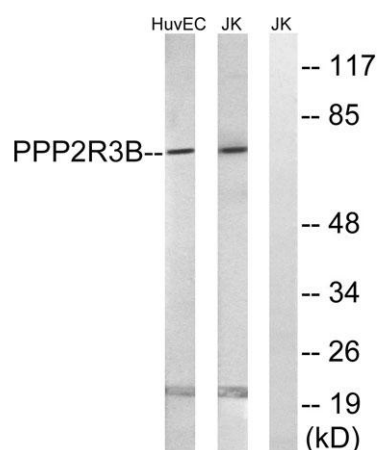
<b>Concentration</b>	1 mg/ml
<b>Observed band</b>	70kD
<b>Human Gene ID</b>	5528
<b>Human Swiss-Prot Number</b>	Q14738
<b>Alternative Names</b>	PPP2R5D; Serine/threonine-protein phosphatase 2A 56 kDa regulatory subunit delta isoform; PP2A B subunit isoform B'-delta; PP2A B subunit isoform B56-delta; PP2A B subunit isoform PR61-delta; PP2A B subunit isoform R5-delta

**Background**

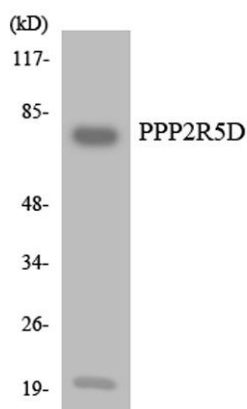
The product of this gene belongs to the phosphatase 2A regulatory subunit B family. Protein phosphatase 2A is one of the four major Ser/Thr phosphatases, and it is implicated in the negative control of cell growth and division. It consists of a common heteromeric core enzyme, which is composed of a catalytic subunit and a constant regulatory subunit, that associates with a variety of regulatory subunits. The B regulatory subunit might modulate substrate selectivity and catalytic activity. This gene encodes a delta isoform of the regulatory subunit B56 subfamily. Alternatively spliced transcript variants encoding different isoforms have been identified. [provided by RefSeq, Jul 2008],



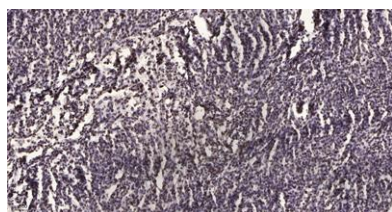
**Western Blot analysis of 293T cells using PP2A-B56- $\delta$  Polyclonal Antibody diluted at 1:1000**



Western blot analysis of lysates from Jurkat and HUVEC cells, using PPP2R5D Antibody. The lane on the right is blocked with the synthesized peptide.



Western blot analysis of the lysates from HUVEC cells using PPP2R5D antibody.



Immunohistochemical analysis of paraffin-embedded human brain tumor. 1, Antibody was diluted at 1:200(4° overnight). 2, Tris-EDTA,pH9.0 was used for antigen retrieval. 3,Secondary antibody was diluted at 1:200(room temperature, 45min).