

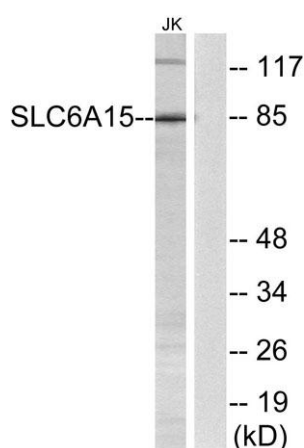
SLC6A15 rabbit pAb**Cat#: orb769584 (Manual)**

For research use only. Not intended for diagnostic use.

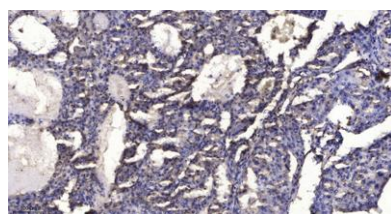
Product Name	SLC6A15 rabbit pAb
Host species	Rabbit
Applications	WB;IHC
Species Cross-Reactivity	Human;Rat;Mouse;
Recommended dilutions	WB 1:500-2000;IHC-p 1:50-300
Immunogen	The antiserum was produced against synthesized peptide derived from human SLC6A15. AA range:32-81
Specificity	SLC6A15 Polyclonal Antibody detects endogenous levels of SLC6A15 protein.
Formulation	Liquid in PBS containing 50% glycerol, 0.5% BSA and 0.02% sodium azide..
Storage	Store at -20°C. Avoid repeated freeze-thaw cycles.
Protein Name	Sodium-dependent neutral amino acid transporter B(0)AT2
Gene Name	SLC6A15
Cellular localization	Membrane ; Multi-pass membrane protein .
Purification	The antibody was affinity-purified from rabbit antiserum by affinity-chromatography using epitope-specific immunogen.
Clonality	Polyclonal

Concentration	1 mg/ml
Observed band	85kD
Human Gene ID	55117
Human Swiss-Prot Number	Q9H2J7
Alternative Names	SLC6A15; B0AT2; NTT73; SBAT1; Sodium-dependent neutral amino acid transporter B(0)AT2; Sodium- and chloride-dependent neurotransmitter transporter NTT73; Sodium-coupled branched-chain amino-acid transporter 1; Solute carrier family 6 member

Background This gene encodes a member of the solute carrier family 6 protein family which transports neutral amino acids. The encoded protein is thought to play a role in neuronal amino acid transport (PMID: 16185194) and may be associated with major depression (PMID: 21521612). Multiple transcript variants encoding different isoforms have been found for this gene. [provided by RefSeq, Feb 2012],



Western blot analysis of lysates from Jurkat cells, using SLC6A15 Antibody. The lane on the right is blocked with the synthesized peptide.



Immunohistochemical analysis of paraffin-embedded human liver cancer. 1, Antibody was diluted at 1:200(4° overnight). 2, Tris-EDTA,pH9.0 was used for antigen retrieval. 3,Secondary antibody was diluted at 1:200(room temperature, 45min).