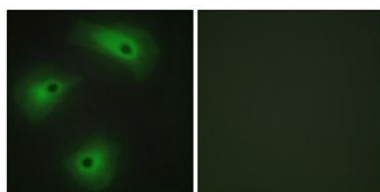


TMEM16A rabbit pAb**Cat#: orb769581 (Manual)**

For research use only. Not intended for diagnostic use.

Product Name	TMEM16A rabbit pAb
Host species	Rabbit
Applications	IF;ELISA
Species Cross-Reactivity	Human;Mouse;
Recommended dilutions	Immunofluorescence: 1/200 - 1/1000. ELISA: 1/20000. Not yet tested in other applications.
Immunogen	The antiserum was produced against synthesized peptide derived from human TM16A. AA range:921-970
Specificity	TMEM16A Polyclonal Antibody detects endogenous levels of TMEM16A protein.
Formulation	Liquid in PBS containing 50% glycerol, 0.5% BSA and 0.02% sodium azide..
Storage	Store at -20°C. Avoid repeated freeze-thaw cycles.
Protein Name	Anoctamin-1
Gene Name	ANO1
Cellular localization	Cell membrane ; Multi-pass membrane protein . Cytoplasm . Cytoplasmic localization seen in neoplastic cells of head and neck squamous cell carcinoma (HNSCC) tumors. .
Purification	The antibody was affinity-purified from rabbit antiserum by affinity-chromatography using epitope-specific immunogen.

Clonality	Polyclonal
Concentration	1 mg/ml
Observed band	
Human Gene ID	55107
Human Swiss-Prot Number	Q5XXA6
Alternative Names	ANO1; DOG1; ORAOV2; TAOS2; TMEM16A; Anoctamin-1; Discovered on gastrointestinal stromal tumors protein 1; Oral cancer overexpressed protein 2; Transmembrane protein 16A; Tumor-amplified and overexpressed sequence 2
Background	domain:The region spanning the fifth and sixth transmembrane domains probably forms the pore-forming region.,function:Acts as a calcium-activated chloride channel. Required for normal tracheal development.,similarity:Belongs to the anoctamin family.,tissue specificity:Broadly expressed with higher levels in liver and skeletal muscle.,



Immunofluorescence analysis of HeLa cells, using TM16A Antibody. The picture on the right is blocked with the synthesized peptide.