

**CdcA4 rabbit pAb****Cat#: orb769569 (Manual)**

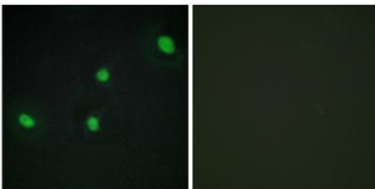
For research use only. Not intended for diagnostic use.

<b>Product Name</b>	CdcA4 rabbit pAb
<b>Host species</b>	Rabbit
<b>Applications</b>	IHC;IF;WB;ELISA
<b>Species Cross-Reactivity</b>	Human;Mouse
<b>Recommended dilutions</b>	WB 1:500-2000 Immunohistochemistry: 1/100 - 1/300. Immunofluorescence: 1/200 - 1/1000. ELISA: 1/5000. Not yet tested in other applications.
<b>Immunogen</b>	The antiserum was produced against synthesized peptide derived from human CDCA4. AA range:121-170
<b>Specificity</b>	CdcA4 Polyclonal Antibody detects endogenous levels of CdcA4 protein.
<b>Formulation</b>	Liquid in PBS containing 50% glycerol, 0.5% BSA and 0.02% sodium azide..
<b>Storage</b>	Store at -20°C. Avoid repeated freeze-thaw cycles.
<b>Protein Name</b>	Cell division cycle-associated protein 4
<b>Gene Name</b>	CDCA4
<b>Cellular localization</b>	Nucleus .
<b>Purification</b>	The antibody was affinity-purified from rabbit antiserum by affinity-chromatography using epitope-specific immunogen.
<b>Clonality</b>	Polyclonal

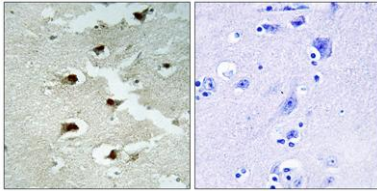
<b>Concentration</b>	1 mg/ml
<b>Observed band</b>	26kD
<b>Human Gene ID</b>	55038
<b>Human Swiss-Prot Number</b>	Q9BXL8
<b>Alternative Names</b>	CDCA4; HEPP; Cell division cycle-associated protein 4; Hematopoietic progenitor protein

**Background**

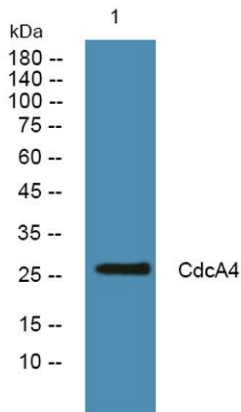
cell division cycle associated 4(CDCA4) Homo sapiens This gene encodes a protein that belongs to the E2F family of transcription factors. This protein regulates E2F-dependent transcriptional activation and cell proliferation, mainly through the E2F/retinoblastoma protein pathway. It also functions in the regulation of JUN oncogene expression. This protein shows distinctive nuclear-mitotic apparatus distribution, it is involved in spindle organization from prometaphase, and may also play a role as a midzone factor involved in chromosome segregation or cytokinesis. Two alternatively spliced transcript variants encoding the same protein have been noted for this gene. Two pseudogenes have also been identified on chromosome 1. [provided by RefSeq, May 2014],



**Immunofluorescence analysis of HepG2 cells, using CDCA4 Antibody. The picture on the right is blocked with the synthesized peptide.**



Immunohistochemistry analysis of paraffin-embedded human brain tissue, using CDCA4 Antibody. The picture on the right is blocked with the synthesized peptide.



Western blot analysis of lysates from A431 cells, primary antibody was diluted at 1:1000, 4° over night