

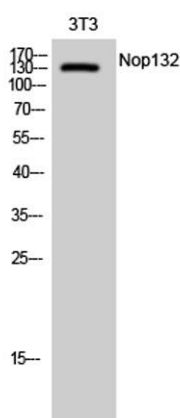
Nop132 rabbit pAb**Cat#: orb769568 (Manual)**

For research use only. Not intended for diagnostic use.

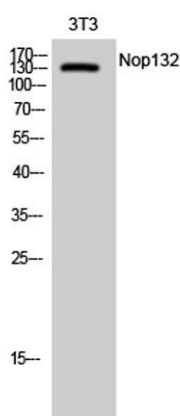
Product Name	Nop132 rabbit pAb
Host species	Rabbit
Applications	WB;IHC;IF;ELISA
Species Cross-Reactivity	Human;Rat;Mouse;
Recommended dilutions	Western Blot: 1/500 - 1/2000. Immunohistochemistry: 1/100 - 1/300. ELISA: 1/20000. Not yet tested in other applications.
Immunogen	The antiserum was produced against synthesized peptide derived from human NOL8. AA range:1118-1167
Specificity	Nop132 Polyclonal Antibody detects endogenous levels of Nop132 protein.
Formulation	Liquid in PBS containing 50% glycerol, 0.5% BSA and 0.02% sodium azide..
Storage	Store at -20°C. Avoid repeated freeze-thaw cycles.
Protein Name	Nucleolar protein 8
Gene Name	NOL8
Cellular localization	Nucleus, nucleolus . Localizes in the nucleolar-organizing region during ribosome biogenesis.
Purification	The antibody was affinity-purified from rabbit antiserum by affinity-chromatography using epitope-specific immunogen.
Clonality	Polyclonal

Concentration	1 mg/ml
Observed band	130kD
Human Gene ID	55035
Human Swiss-Prot Number	Q76FK4
Alternative Names	NOL8; C9orf34; NOP132; Nucleolar protein 8; Nucleolar protein Nop132

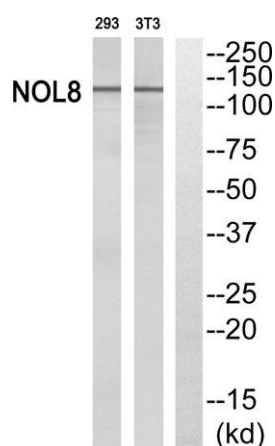
Background NOL8 binds Ras-related GTP-binding proteins (see MIM 608267) and plays a role in cell growth (Sekiguchi et al., 2004 [PubMed 14660641]).[supplied by OMIM, Mar 2008],



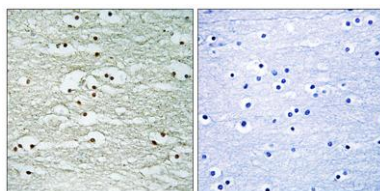
Western Blot analysis of 3T3 cells using Nop132 Polyclonal Antibody diluted at 1:1000 cells nucleus extracted by Minute™ Cytoplasmic and Nuclear Fractionation kit (SC-003, Invent biotech, MN, USA).



Western Blot analysis of NIH-3T3 cells using Nop132 Polyclonal Antibody diluted at 1:1000 cells nucleus extracted by Minute™ Cytoplasmic and Nuclear Fractionation kit (SC-003, Invent biotech, MN, USA).



Western blot analysis of NOL8 Antibody. The lane on the right is blocked with the NOL8 peptide.



Immunohistochemistry analysis of paraffin-embedded human brain, using NOL8 Antibody. The lane on the right is blocked with the NOL8 peptide.