

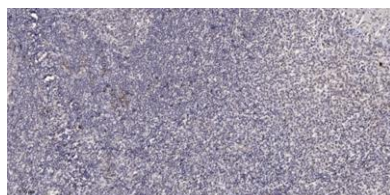
PinX1 rabbit pAb

Cat#: orb769563 (Manual)

For research use only. Not intended for diagnostic use.

Product Name	PinX1 rabbit pAb
Host species	Rabbit
Applications	IHC;IF;ELISA
Species Cross-Reactivity	Human;Rat;Mouse;
Recommended dilutions	Immunohistochemistry: 1/100 - 1/300. ELISA: 1/20000. Not yet tested in other applications.
Immunogen	The antiserum was produced against synthesized peptide derived from human PINX1. AA range:121-170
Specificity	PinX1 Polyclonal Antibody detects endogenous levels of PinX1 protein.
Formulation	Liquid in PBS containing 50% glycerol, 0.5% BSA and 0.02% sodium azide..
Storage	Store at -20°C. Avoid repeated freeze-thaw cycles.
Protein Name	PIN2/TERF1-interacting telomerase inhibitor 1
Gene Name	PINX1
Cellular localization	Nucleus . Nucleus, nucleolus. Chromosome, telomere. Chromosome, centromere, kinetochore. Localizes in nucleoli, at telomere speckles and to the outer plate of kinetochores. Localization to the kinetochore is mediated by its central region and depends on NDC80 and CENPE.
Purification	The antibody was affinity-purified from rabbit antiserum by affinity-chromatography using epitope-specific immunogen.

Clonality	Polyclonal
Concentration	1 mg/ml
Observed band	
Human Gene ID	54984
Human Swiss-Prot Number	Q96BK5
Alternative Names	PINX1; LPTL; LPTS; PIN2/TERF1-interacting telomerase inhibitor 1; Liver-related putative tumor suppressor; Pin2-interacting protein X1; Protein 67-11-3; TRF1-interacting protein 1
Background	<p>domain:The TID (telomerase inhibiting domain) domain is sufficient to bind TERT and inhibit its activity.,function:Inhibits telomerase activity. May inhibit cell proliferation and act as tumor suppressor.,similarity:Belongs to the PINX1 family.,similarity:Contains 1 G-patch domain.,subcellular location:In nucleoli and at telomere speckles.,subunit:Binds to MCRS1, TERT and TERF1.,tissue specificity:Ubiquitous; expressed at low levels. Not detectable in a number of hepatocarcinoma cell lines.,</p>



Immunohistochemical analysis of paraffin-embedded human tonsil. 1, Antibody was diluted at 1:200(4° overnight). 2, Tris-EDTA,pH9.0 was used for antigen retrieval. 3,Secondary antibody was diluted at 1:200(room temperature, 45min).